

Grandstream Networks, Inc.

GSC356X Quick Installation Guide



Introduction

The GSC3560/GSC3565 is a smart outdoor intercom that functions as an advanced access control system, delivering secure facility access and real-time monitoring for buildings of all sizes.

Key features include:

- A durable metal casing with IP66 weatherproofing and IK10 vandal resistance for reliable operation in harsh environments
- Built-in dual microphones and a high-power 10W speaker for clear two-way intercom communication
- PoE support for streamlined installation with a single network cable
- Multiple alarm interfaces (alarm-in, relay-out, RS485, line-out) for integration with existing security systems
- Support for various door access methods, including mobile app, SIP call, HTTP API, and QR code (GSC3565 only)

The GSC3560/GSC3565 can be integrated with Grandstream multimedia phones, GSC3570/GSC3574/GSC3575 indoor control stations, and GS Wave soft phones and desk phones, which enables a complete, unified building security solution.

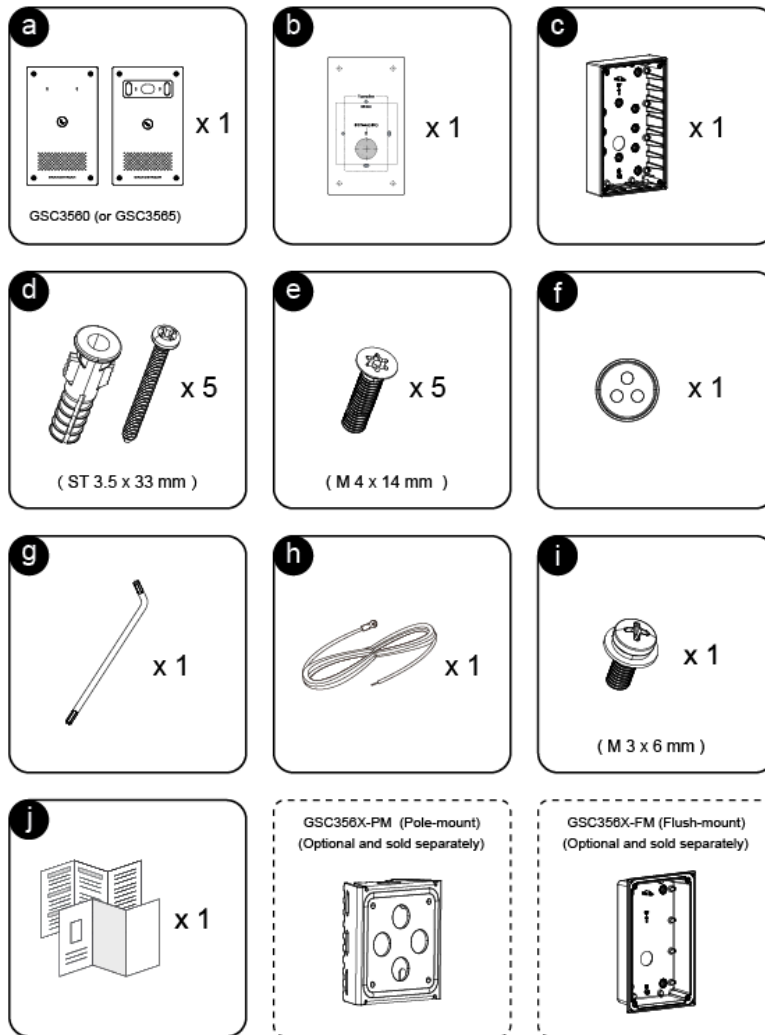
With advanced security design, including Solid State Relay (SSR) technology, the device provides strong protection against magnetic interference and unauthorized access attempts.

Precautions:

- Do not attempt to disassemble or modify the device.
- Do not expose this device to temperatures outside the range of -40 °C to 70 °C for operating and -40°C to 70°C for storage.
- Do not expose this device to environments outside of the following humidity range: 10-90% RH (non-condensing).
- Do NOT power cycle the device during system boot up or firmware upgrade. You may corrupt firmware images and cause the unit to malfunction.

Package Contents

- **A** : 1 x GSC3565/GSC3560.
- **B** : 1 x Positioning Sticker.
- **C** : 1 x Wall Bracket.
- **D** : 5 x (ST 3.5 x 32mm) Screws and Screw Anchors.
- **E** : 5 x (M 4 x 14mm) Screws.
- **F** : 2 x Dual-Port Waterproof Silicone Plug.
- **G** : 1 x Wrench.
- **H** : 1 security bolt.
- **I** : 1 x (M3 x 6mm) Screw.
- **J** : 1 x Quick Installation Guide, and 1 x Regulatory Paper.



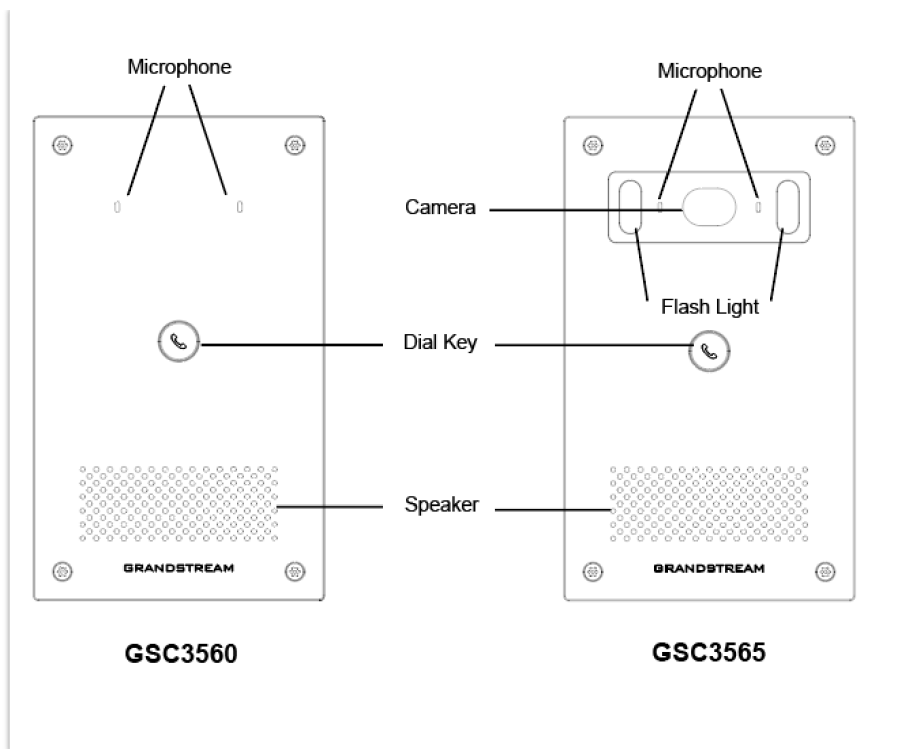
GSC3565GSC3560 Package Content

Note

Check the package before installation. If you find anything missing, contact your system administrator.

Description of the GSC356X

The figure below shows a description of the front views of the GSC356X series of smart outdoor intercom devices:

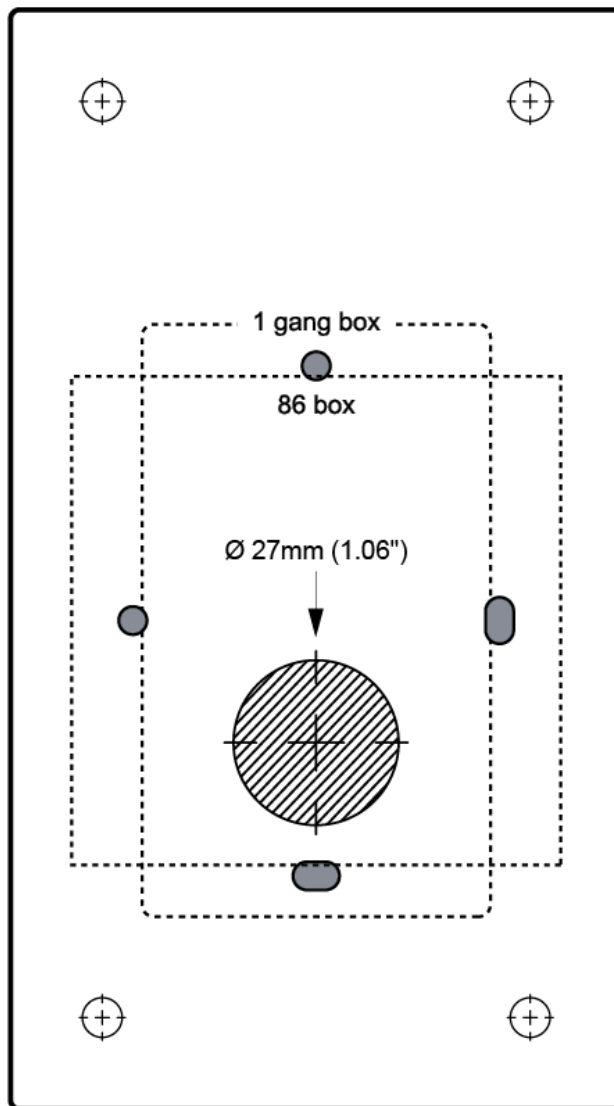


GSC356X Front View

GSC356X Wall Mount Installation

This section provides step-by-step instructions for the IN-wall mounting of the the GSC356X IP intercom device, using the GSC3565 model as an example, on a wall using one of the available installation methods:

A **positioning sticker** is included in the package to ensure accurate and aligned mounting across all installation types.



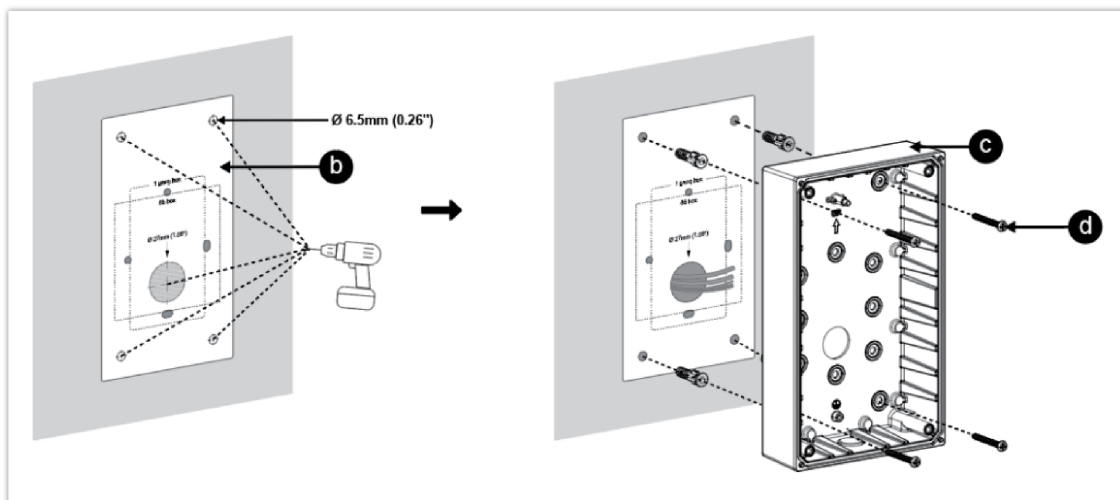
Please follow these steps carefully to ensure a weather-protected and tamper-resistant installation:

1. Place the provided **positioning sticker** on the wall at the desired mounting height.
2. Using the markings on the sticker as a guide, drill holes at the indicated positions.

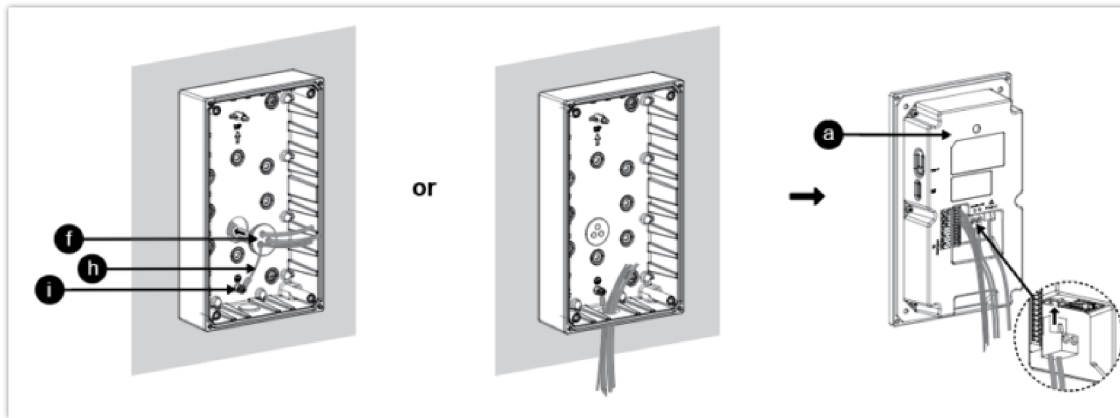
Note

Drill patterns may vary depending on the selected installation method (1-gang box, 86 box, or direct wall mount).

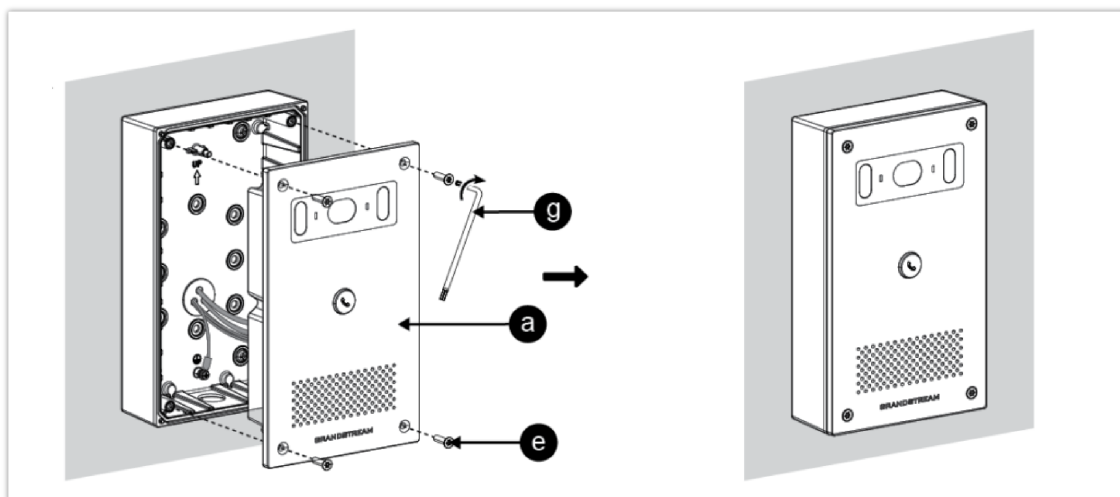
3. Insert the supplied **screw anchors** into the holes.
4. Secure the **wall-mounted bracket** using the included **ST 3.5 × 33mm self-tapping screws**, along with their screws.



5. Route the necessary cables (power, network, door strike, etc.) through the **center** opening or the **bottom** opening of the **bracket**, depending on the wires' source.
6. Insert the **waterproof silicone port plug** into the cable exit area at the bottom of the **rear cover** to protect and organize the cables.
7. Place the **rear cover** onto the bracket, aligning it with the screw holes.
8. Secure the rear cover by placing the **securing clip** on top of it.
9. Optionally, connect the DC POWER outlet to power on the device, or use an Ethernet cable connected to a PoE switch.



10. Place the device onto the wall-mounted bracket.
11. Use a wrench to tighten the **M 4 × 14mm screws**, securing the door station to the bracket.

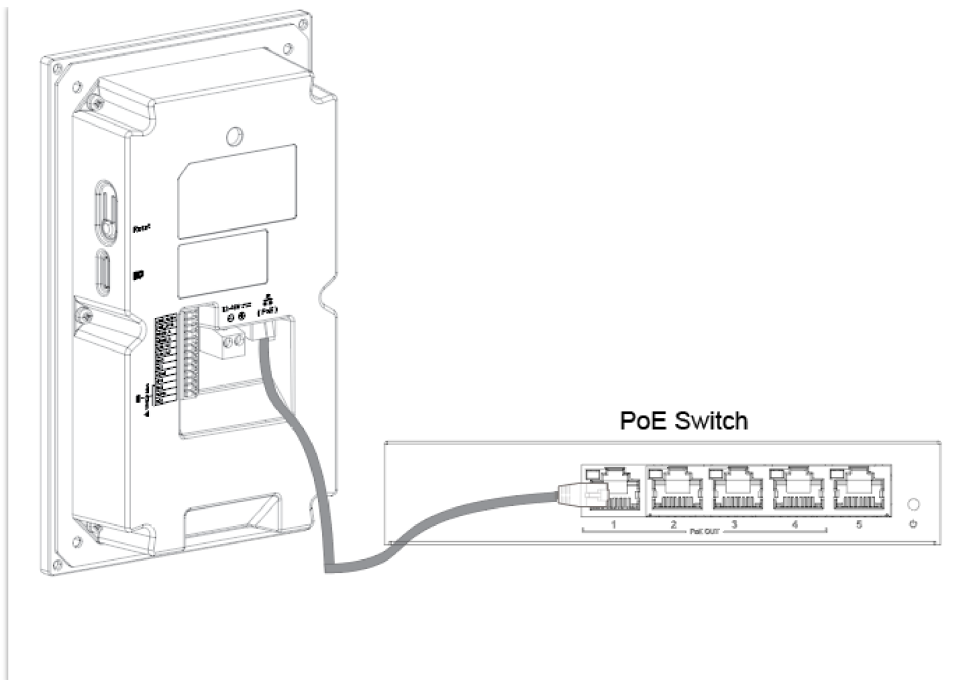


Powering the GSC356X

The GSC356X IP Smart outdoor intercom can be powered using PoE or PSU:

Using PoE (Suggested)

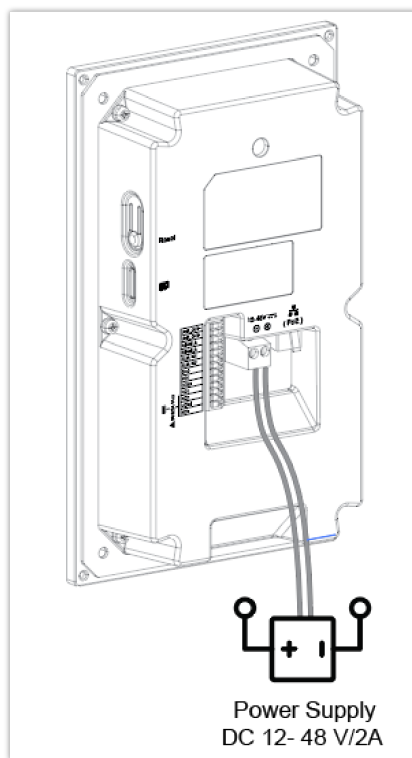
- Connect the other end of the RJ45 cable to the PoE switch.
- A PoE injector can be used if a PoE switch is not available.



Powering the GSC356X Using PoE

Using Power Supply Unit (Not Provided)

- Connect the other end of the RJ45 cable to a network switch or router, for data transmission only, not to power on the device.
- Connect a DC 12-48V power source via the related cable to the correct pins of the GSC356X to power on the device.



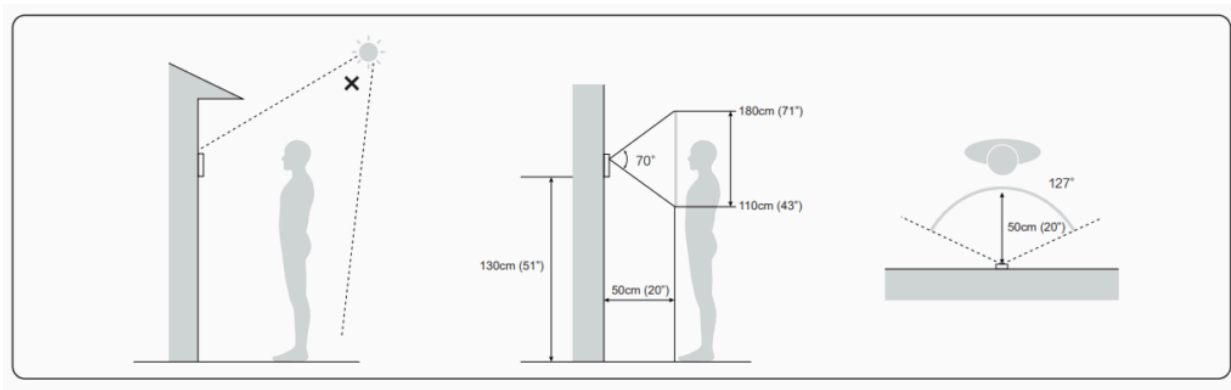
Using a Power Supply Unit

Monitored Angles (GSC3565)

To ensure optimal video coverage and intercom usability:

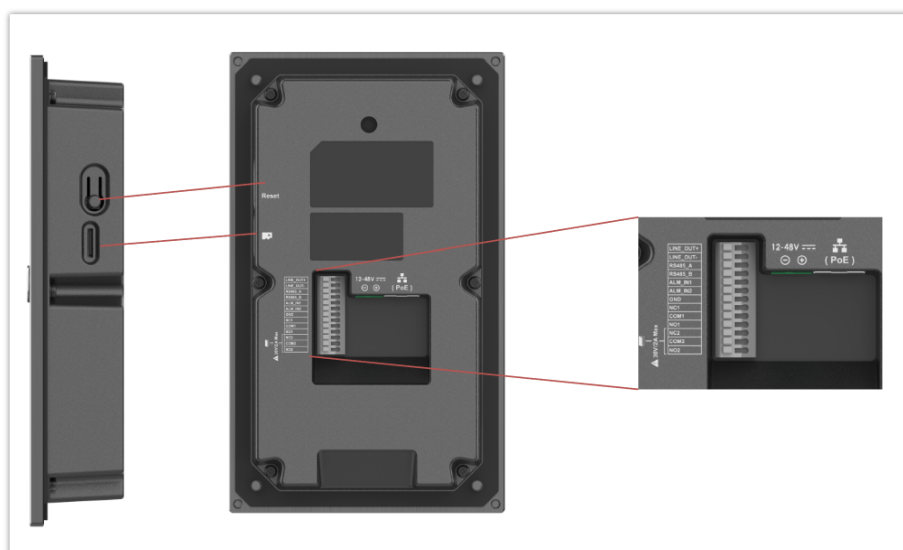
- **Mount the camera lens at 130 cm (51") height** from the ground.
- **Ideal face detection height** is approximately 110 cm (43").
- Maintain a **clear front space of at least 50 cm (20")**.

- The device provides a **127° horizontal** and **70° vertical field of view**, covering a wide area effectively.
- **Avoid direct exposure to strong light sources** (e.g., sunlight) to prevent image distortion.



GSC356X Wiring Connection

The GSC3565/GSC3560 provides a terminal block interface for power, relay control, alarm integration, and RS-485 communication. Below is a detailed explanation of each pin and its function:



GSC356X Wiring Connection

Connector	Function	Note
Network Port(PoE)	Ethernet and PoE Supply	Single 10/100Mbps network port, supports 802.3 at PoE power supply.
DC IN+	Power Supply (+)	Positive terminal for DC power input. Supports a wide voltage range DC 12V–48V .
DC IN-	Power Supply (-)	Negative terminal for DC power input.
LINE OUT +	Audio Line Output (+)	Positive audio output terminal for connecting external amplifiers, speakers, or audio systems.
LINE OUT –	Audio Line Output (-)	Negative audio output terminal for connecting external amplifiers, speakers, or audio systems.
RS485A	RS485 Communication (+)	Positive line for RS485 differential signal.
RS485B	RS485 Communication (-)	Negative line for RS485 differential signal.
ALARM1	Alarm Input 1	Input for external devices (e.g., door contacts, sensors, or exit buttons).
ALARM2	Alarm Input 2	

GND	Alarm Ground	Common ground reference for alarm inputs.
NO2	Relay Output2	<p>For “Fail Secure” (Locked when Power Lost) Strike, connect COM2 & NO2.</p> <p>For “Fail Safe” (Open when No Power) Magnetic Lock, connect COM2 & NC2.</p> <p>Relay: Maximum current allowed is 30VDC/2A.</p> <p>Note: Relay Output 2 uses a Solid State Relay (SSR), which provides electronic switching instead of mechanical contacts. Verify that the connected lock is compatible with the SSR output specifications and voltage requirements (30V/2A MAX)</p>
COM2		
NC2		
NO1	Relay Output1	<p>For “Fail Secure” (Locked when Power Lost) Strike, connect COM1 & NO1.</p> <p>For “Fail Safe” (Open when No Power) Magnetic Lock, connect COM1 & NC1.</p> <p>Relay: Maximum current allowed is 30VDC/2A.</p>
COM1		
NC1		
SD Card Slot	Data Storage	Maximum capacity 256GB.
Reset Button	System Reset	Press and hold to restore to factory defaults.
Tamper Button	Tamper Detection	It prevents violent demolition.

GSC3565/GSC3560 Wiring Connection

Accessing the GSC356X

The GSC356X includes an embedded web server that responds to HTTP/HTTPS GET and POST requests. This allows users to configure and manage the device through any standard web browser.

To begin configuration, please refer to the sections below.

Notes:

- To access the GSC356x web interface, your computer must be connected to the same local network (subnet) as the GSC356x. *(This is typically done by connecting your computer to the **same router, hub, or network switch** as the device.)*
- If no hub or switch is available (or if all ports are in use), you can also connect the GSC356x **directly to your PC’s Ethernet port** using a network cable and configure both devices with compatible static IP addresses.

Accessing the GSC356X via Dynamic IP (DHCP)


By default, the GSC356X is configured to automatically obtain an IP address from a DHCP server, such as your network router. This method is suitable for most typical office or home setups.

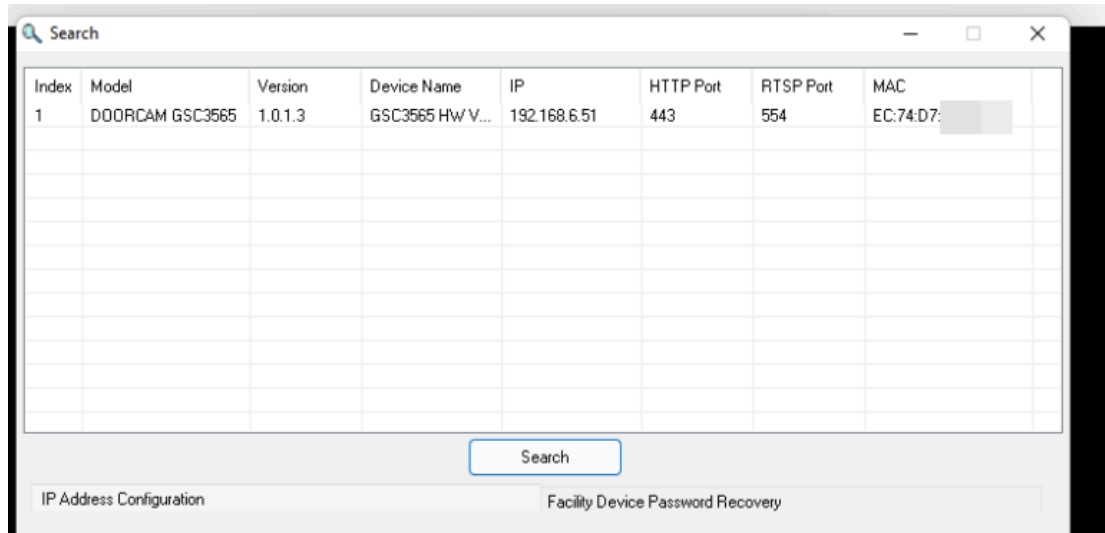
To connect the GSC356X to your network, please follow the instructions below:

1. Use an Ethernet cable to connect the GSC356X to a router, network switch, or access point with DHCP enabled.
2. **Power the device** using **one** of the following methods:
 - **PoE (Power over Ethernet):** The GSC356X supports **IEEE 802.3at Class 4**, allowing it to receive power and data over a single Ethernet cable.
 - **Power Adapter:** Connect a DC 12V power source via the related cable to the correct pins of the GSC356X.
3. After the device powers on, it will receive an IP address from the DHCP server. You can locate this IP using the tools mentioned in the following sections.

Using GS Search to Retrieve the GSC356X IP Address

GS search is a program that is used to detect and capture the IP address of the Grandstream facility management solution devices. Below are instructions for using the "GS Search" utility tool:

1. Download the GS Search utility tool from the Grandstream website using the following link: [GS_Search](#)
2. Double-click on the downloaded file, and the search window will appear.
3. Click on the "Search" button to start the discovery for Grandstream devices. 
4. The detected devices will appear in the output field as shown below.



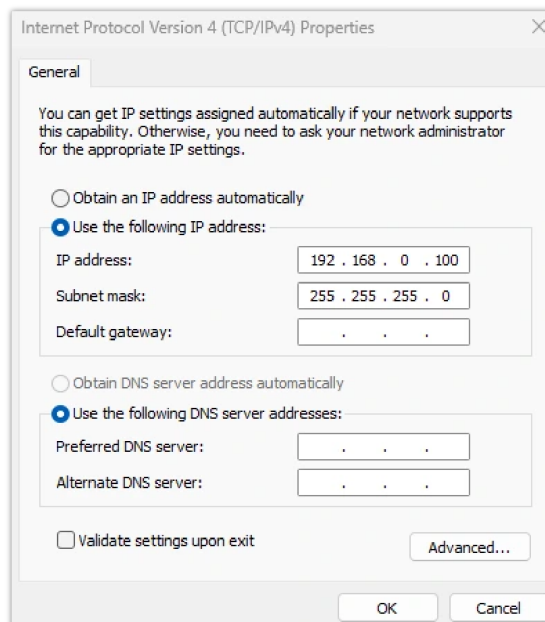
GS Search Discovery

Accessing the GSC356X via Static IP

If there is no DHCP server in the network, or the GSC356X does not get an IP from the DHCP server, users can connect the GSC356X to a computer directly, using a static IP to configure the GSC356X.

If no DHCP server is available or the DHCP request times out (after 3 minutes), the GSC356x will use its default static IP address:
192.168.0.160

1. Connect the Ethernet cable from GSC356X to the computer network port directly.
2. Configure the computer using Static IP: **192.168.0.XXX** (1<XXX<255, **except for 160**) and configure the "Subnet mask" to "**255.255.255.0**". Leave the "Default Gateway" to "**Blank**" like below:



- Power on the GSC356X, using a PoE injector or external DC power.
- Enter **192.168.0.160** in the address bar of the browser to access the GSC356X Web UI.

GSC356X Web UI Login

Once the GSC356X is accessed through its IP address (whether static or dynamically assigned), the embedded Web User Interface (Web UI) will load in the browser. This interface allows administrators to configure and manage the device.

Upon accessing the Web UI, a **login screen** will appear, prompting for credentials:



GSC356x Web UI Login