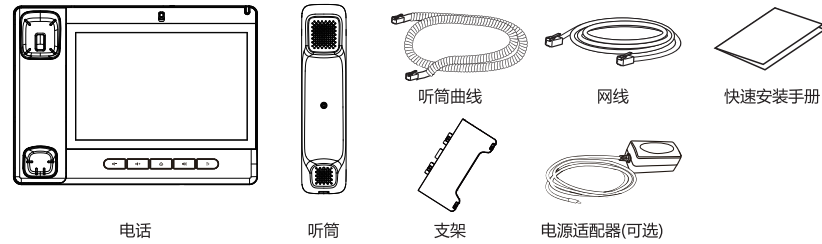


A330

快速安装手册

深圳方位通讯科技有限公司
www.fanvil.com

包装清单



屏幕图标



按键功能



信息指示灯



在待机或振铃状态下: 减小或增大铃声音量
在通话状态下: 增大或减小耳机, 手柄, 免提音量



主页键, 返回待机主页面



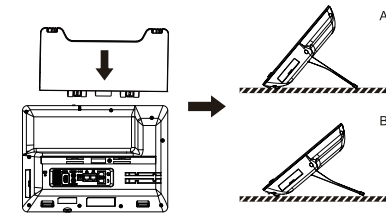
免提键, 打开/关闭免提通道



返回键, 返回上一级菜单/页面

设备安装

• 支架安装

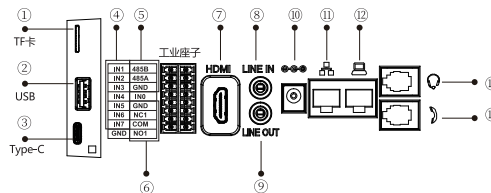


• 设备连接

请按下图说明将电源适配器, 网络, PC, 听筒, 耳机连接到相应的接口。

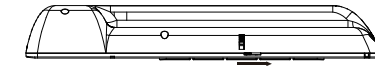
- TF卡槽: 可外接最大 256 GB的SD卡
- USB接口: 连接USB设备 (U盘)
- Type C接口: 兼容多种设备
- 报警输入接口: 连接报警传感器, 触发设置的报警功能
- RS-485接口: GND, RS-485A, RS-485B
- 1组短路输出检测接口: 用于控制电锁、报警器等;
NC: 空闲状态下连通(常闭),
COM: 继电器的触电(公共端),
NO: 空闲状态下断开(常开)
- HDMI接口: 可外接显示屏, 传输高清视频和音频信号
- LINE IN接口: 连接广播服务器和外部音源等
- LINE OUT接口: 连接功放等
- 电源接口: 连接电源适配器, DC 12V, 3A
- 网络接口: 连接局域网或者互联网
- PC接口: 连接电脑的网络接口
- 耳机接口: 连接耳机
- 听筒接口: 连接话机听筒

备注: POE供电的时候, 如果有外接HDMI/TYPPEC投屏等其他GND的设备, 建议先接入POE电源再插入外设接口。



摄像头信息

- 1: 移动滑块可遮挡摄像头。



- 2: 旋转旋钮可调整摄像头上下视角角度。



配置

通过话机配置

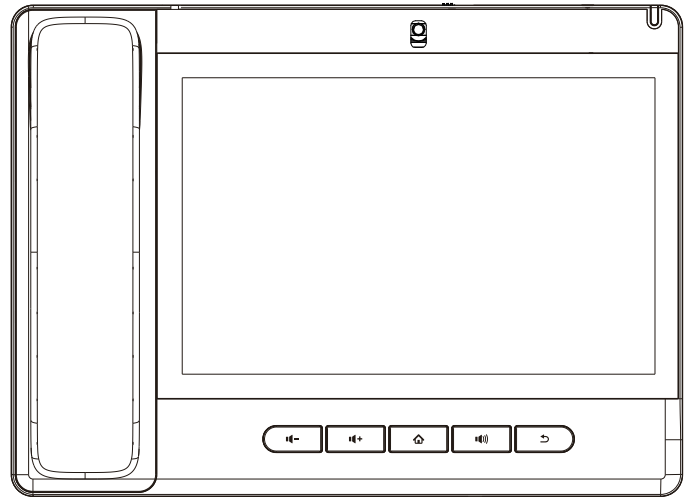
1. 点击话机设置 > 高级设置。(设备的默认密码为“admin”)
2. 选择SIP设置, 选择任一线路
3. 开启注册状态, 依次输入服务器地址、服务器端口、用户名和密码等。

通过网页配置

1. 从设备上获取IP地址: 按话机设置图标 > 状态 > 常用信息, 获取设备IP。
2. 登录: 在网页浏览器上输入IP地址。电脑和电话应该处于同一个IP地址段, 默认的用户名和密码都是“admin”。
3. 配置: 选择网络/线路等, 并填写相关内容, 保存配置。

语言设置

1. 点击话机设置 > 基础设置 > 系统语言。
2. 选择需要的语言。

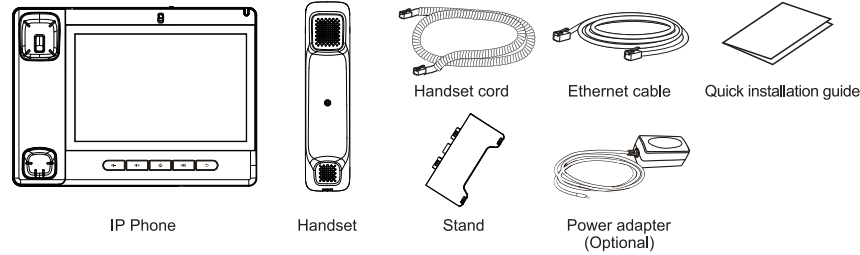


A330

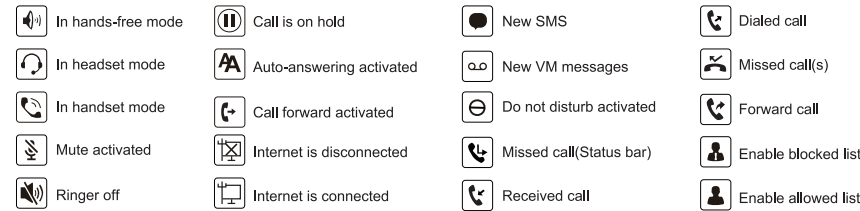
Quick Installation Guide

Fanvil Technology Co., Ltd.
www.fanvil.com

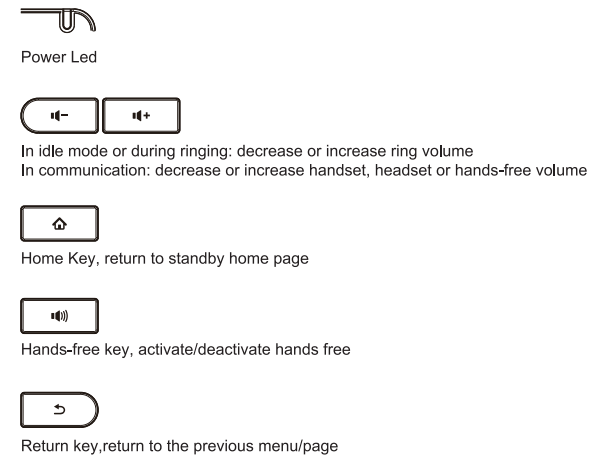
Packaging list



Screen icon

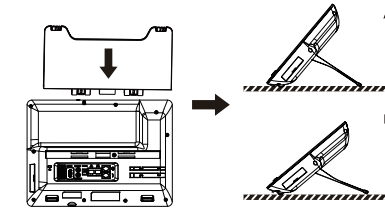


Keys features

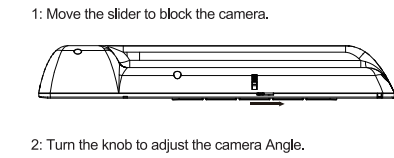


Install the device

• Desk mount method



• Camera information



Configuration

Configuration via phone

1. Press Phone Settings icon > Advanced Settings . (The default username and password are both 'admin'.)
2. Select SIP Settings > Select Line.
3. Enable Registration Status. Then input the Server Address, Server Port, Authentication User and Password etc.

Configuration via web

1. Get the IP address from the phone: Press Phone Settings icon > Status > Common.
2. Login: Input the IP address in the web browser. The PC and phone should be in the same IP address segment (The default username and password are both 'admin'.)
3. Configure: Select Network/Line, etc. And fill the relevant content. Save the configuration.

Language settings

1. Press Settings icon > System Settings > System Language.
2. Select the desired language.

• Connecting to the device

Please connect power adapter, network, PC, handset and headset to the corresponding ports as described in below picture.

- ① TF Card Slot: Supports external SD cards up to 256 GB.
- ② USB Port: Connects USB devices (USB disk).
- ③ Type-C Port: Compatible with multiple devices.
- ④ Alarm Input: Connects alarm sensors to trigger preset alarms.
- ⑤ RS-485 Port: GND, RS-485A, RS-485B.
- ⑥ 1 Short-Circuit Output: Controls electric locks, alarms, etc. NC: Connected when idle; COM: Relay contact; NO: Disconnected when idle.
- ⑦ HDMI Port: Connects external displays for HD video/audio.
- ⑧ LINE IN: Connects broadcast servers, external audio sources, etc.
- ⑨ LINE OUT: Connects power amplifiers, etc.
- ⑩ Power Port: Connects power adapter, DC 12V, 3A.
- ⑪ Network Port: Connects to LAN or Internet.
- ⑫ PC Port: Connects to computer's network port.
- ⑬ Headphone Port: Connects headphones.
- ⑭ Handset Port: Connects IP Phone handsets.

Note: When powered via PoE, if external devices with additional GND connections (such as HDMI or USB-C display devices) are used, it is recommended to connect the PoE power first, and then plug in the external interfaces.

