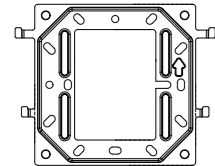


Figure 5-2 Wall mounting bracket



NOTE

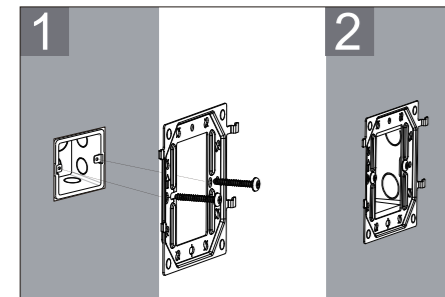
- Before installation, ensure all components in the package are in good condition and prepare the necessary tools.
- During installation, ensure the bracket is against the wall with the arrow pointing upward.

5.1.1 Installing the Bracket with Junction Box

The bracket supports mounting on the following types of junction boxes.

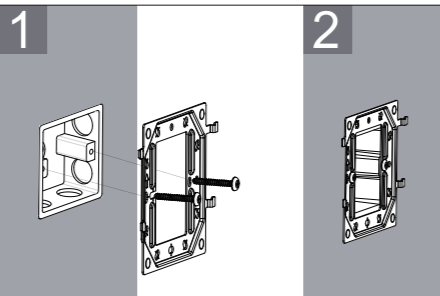
- 86 junction box
- Secure the mounting bracket to the 86 junction box with two **PM 4 × 16 mm screws**.

Figure 5-3 Wall mounting with 86 junction box



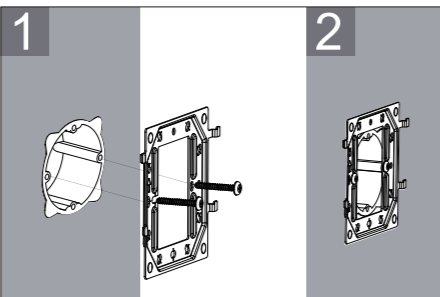
- 77 junction box
- Secure the mounting bracket to the 77 junction box with two **PM 4 × 16 mm screws**.

Figure 5-4 Wall mounting with 77 junction box



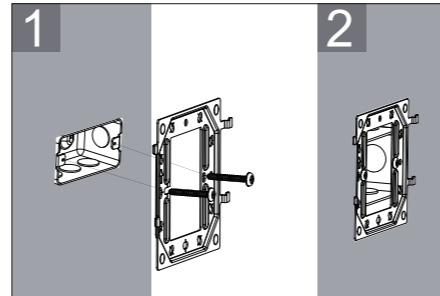
- Round junction box
- Secure the mounting bracket to the round junction box with two **KM 3 × 30 mm screws**.

Figure 5-5 Wall mounting with round junction box



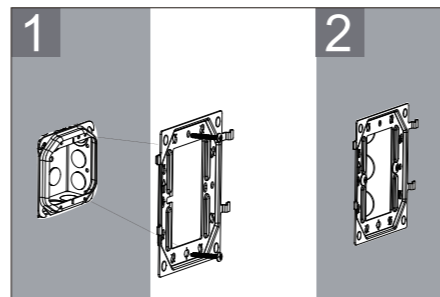
- Single-gang box
- Secure the mounting bracket to the single-gang box with two **TM 6 × 20 mm screws**.

Figure 5-6 Wall mounting with single-gang box



- Double-gang box
- Secure the mounting bracket to the double-gang box with two **TM 6 × 20 mm screws**.

Figure 5-7 Wall mounting with double-gang box

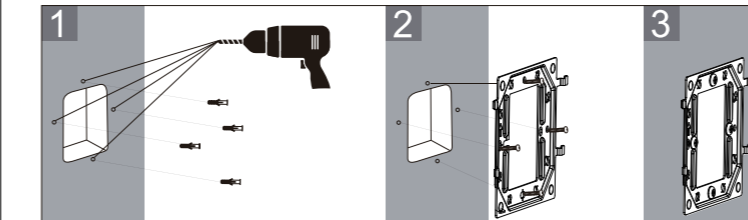


5.1.2 Installing the Bracket without Junction Box

Procedure

1. Attach the mounting template on the wall, drill four hole positions to a depth of 30 mm with a 6mm electric drill, and then remove the template.
2. Insert four rubber plugs into the holes and keep them flush with the wall.
3. Secure the bracket to the wall with four **PA 4 × 30 mm screws**.

Figure 5-8 Wall mounting without junction box

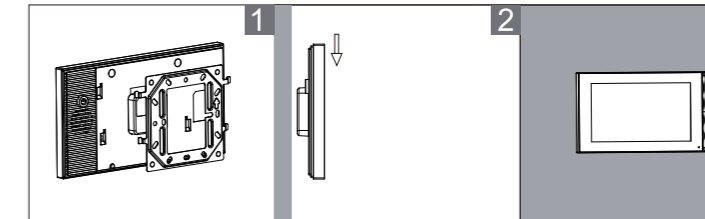


5.2 Mounting the Station on the Bracket

Procedure

1. Connect cables to the rear panel of the Station. For details, see [4. Wiring](#).
2. Align the four slots on the Station's rear panel with the four hooks on the bracket, and then slide the Station downward to secure it.

Figure 5-9 Mount the station on the bracket

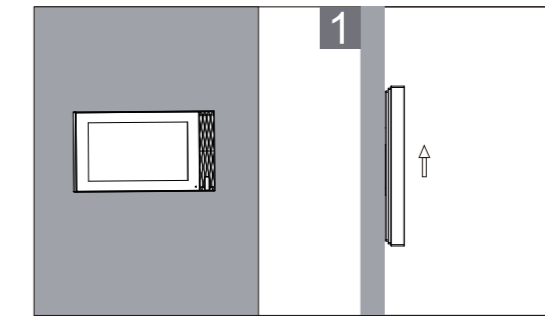


5.3 Removing the Station from the Bracket

Procedure

Lift the Station upward to remove it from the bracket.

Figure 5-10 Remove the station from the bracket



6. Device Maintenance

CAUTION

- Do not hit the Station with hard objects.
- Do not press hard on the Station screen.
- Do not expose the Station to chemicals, such as alcohol, acids, disinfectants, etc.
- Clean the Station surface gently with a damp cloth, and then wipe it dry with a soft cloth.
- To prevent the Station from becoming loose, ensure the screw holes have the correct diameter and depth. If the holes are too large, apply adhesive to secure the screws.

FCC Compliance:

This device complies with Part 15 of the FCC Rules. Operation is subject to the following two conditions:

- 1) This device may not cause harmful interference, and
- 2) this device must accept any interference received, including interference that may cause undesired operation.

NOTE: This equipment has been tested and found to comply with the limits for a Class B digital device, pursuant to part 15 of the FCC Rules.

These limits are designed to provide reasonable protection against harmful interference in a residential installation. This equipment generates, uses and can radiate radio frequency energy and, if not installed and used in accordance with the instructions, may cause harmful interference to radio communications. However, there is no guarantee that interference will not occur in a particular installation. If this equipment does cause harmful interference to radio or television reception, which can be determined by turning the equipment off and on, the user is encouraged to try to correct the interference by one or more of the following measures:

- Reorient or relocate the receiving antenna.
- Increase the separation between the equipment and receiver.
- Connect the equipment into an outlet on a circuit different from that to which the receiver is connected.
- Consult the dealer or an experienced radio/TV technician for help.

Changes or modifications not expressly approved by the party responsible for compliance could void the user's authority to operate the equipment.

FCC RF Exposure Warning Statement:

This equipment complies with FCC radiation exposure limits set forth for an uncontrolled environment. This equipment shall be installed and operated with minimum distance 20cm between the radiator & body.

Responsible Party:

Company name: Oasis Compliance, Inc.
Address: 3313 Verdi Dr, San Jose, CA 95111, United States
Tel: 2026028330
Email: info@oasis-compliance.com

Fanvil Technology Co., Ltd.

Website: www.fanvil.com
E-Mail: sales@fanvil.com support@fanvil.com
Tel: +86-755-2640-2199
Add: 13th Floor, Building 2, Runzhi R&D Center, Xin'an Street, Bao'an District, Shenzhen, Guangdong, China