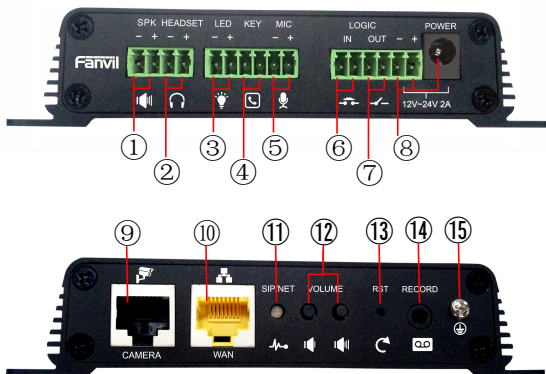




PA2

Port Definition



- ① **Speaker interface:** according to the device input voltage adaptive output maximum power; 4Ω speaker, POE / 10W, 12V / 10W, 18V / 20W, 24V / 30W. The greater the horn impedance, the smaller the output power.
Suggested wire diameter: 18AWG or larger diameter.
- ② **Headset interface:** speaker audio signal output impedance 32 Ohm, single-ended output voltage 1.2 V, for external headset or active speakers.
- ③ **LED interface:** output 5V, 5 mA current, can be an external LED, indicating the network status, call status, registration status.
- ④ **Function key interface:** connection switch, you can log on page set the call number or IP address.
- ⑤ **Microphone interface:** the proposed use of impedance of 2.2K Ohm electret condenser microphone, sensitivity: -38dB, bias voltage 2.2V. **Microphone signal cable it is recommended to use a shielded cable and do not connect the shield cable to the grounding screw, improve anti-interference.**
- ⑥ **Switch input interface:** the connection switch, you need to log on to the relevant settings page.
- ⑦ **Switch output interface:** Corresponding to the short-circuit input interface, login device security page settings, you can control the alarm light, electric locks and other equipment; with the adjacent ⑧ power port connection for external equipment power supply.
- ⑧ **Power input interface:** 12V ~ 24V 2A input, according to the input voltage to determine the maximum output power amplifier.
- ⑨ **Camera interface:** standard RJ45 interface, connect the original camera, the proposed use of five or five sub-network cable
- ⑩ **Ethernet interface:** WAN port, standard RJ45 interface, 10 / 100M adaptive, support POE input, it is recommended to use five or Super five network cable.
- ⑪ **Registration/Network LED:** indicates network status, call status, registration status.
Fast flashing: network anomaly or SIP account exception. Slow flashing: during a call.
Always bright: successful registration.
- ⑫ **Volume control key:** standby to adjust the volume of the ringtone, call only adjust the call volume, broadcast only adjust the broadcast volume.. Long press the volume down key to broadcast the IP address. Long press the volume plus key to switch the IP address acquisition mode (Specific operation see below **search door phone**).
- ⑬ **Restore factory key:** press and hold for 3 seconds to flash the device to restart and restore the factory settings.
- ⑭ **Recording output interface:** the local microphone voice and call voice mixed output, suitable for computer and other equipment recording.
- ⑮ **Grounding screw:** **external parts Metal housing needs to be connected to this interface to prevent static electricity and other interference caused the equipment to work abnormally.(except for microphone accessories)**

()

1. Installation

The first step: the equipment with metal strips (user-owned) fixed in the installation location.

The second step: the Function Key button, speakers and other metal shell with thick wires connected to the device ⑮ grounding screw. And then connect the line of the terminal in turn inserted into the corresponding interface.

The third step: plug the network cable and power, the device light flashes on behalf of the power connection is normal.

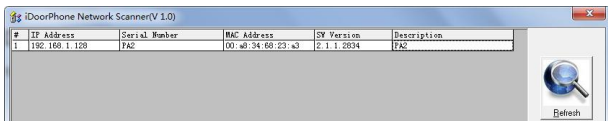
2. Searching Door Phone

There are three methods as shown below to search the door phone.

Method 1:

Open the iDoorPhone Network Scanner. Press the Refresh button to search the door phone and find the IP address.

(Download address <http://download.fanvil.com/tool/iDoorPhoneNetworkScanner.exe>)



Method 2:

Connect the speaker, by pressing the volume down key for 3 seconds (after 30 seconds after power on), the device automatically voice broadcast the machine's IP address.

Method 3:

Long press the volume plus key for 10 seconds, the speaker issued a rapid beep, and then quickly press the three volume plus the key, beep stopped. Wait 10 seconds, Successfully switch to dynamic IP after the system automatically voice broadcast IP address. Switching again will become a fixed IP address.

Default Setting			
Default DHCP Client	Disable	Static IP Address	192.168.1.128
Voice broadcast IP address	Hold the volume down key for 3 seconds	Default Web Port	80

3. SIP door phone setting

Step 1: Log in to the device page

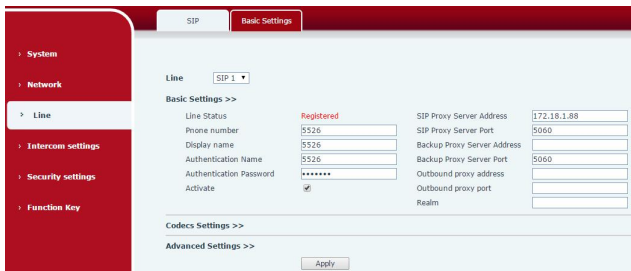
Use the web browser input IP (for example: <http://192.168.1.128>) access, the default user admin, password admin.



Step 2: Add the SIP account.

Set SIP server address, port, user name, password and SIP user with assigned SIP account parameters.

Select "Activate", and then click **[Apply]** to save this setting.

A screenshot of a web interface for SIP settings. On the left is a red sidebar with a menu: System, Network, Line (selected), Intercom settings, Security settings, and Function Key. The main area has a red header with 'SIP' and 'Basic Settings' tabs. Below the header, there's a 'Line' dropdown set to 'SIP 1'. Under 'Basic Settings >>', there are two columns of settings. The first column includes Line Status (Registered), Phone number (5526), Display name (5526), Authentication Name (5526), Authentication Password (masked with dots), and an 'Activate' checkbox which is checked. The second column includes SIP Proxy Server Address (172.18.1.88), SIP Proxy Server Port (5060), Backup Proxy Server Address, Backup Proxy Server Port (5060), Outbound proxy address, Outbound proxy port, and Realm. Below these are sections for 'Codes Settings >>' and 'Advanced Settings >>'. At the bottom center is an 'Apply' button.

Step 3: Set the volume (if not connected can skip)

Set the device volume size, as shown below, click **[Apply]**.

Hands-free volume setting: normal call speaker volume size.

Broadcast output volume: server music broadcast speaker volume size.

Signal volume: call ringing, power back to ling, correct tone, error tone and other volume size.

Microphone Input Volume: microphone volume size.

Audio Settings

First Codec	G.722	Second Codec	G.711A
Third Codec	G.711U	Fourth Codec	G.729AB
Fifth Codec	None	Sixth Codec	None
DTMF Payload Type	101 (96~127)	Default Ring Type	Type 1
G.729AB Payload Length	20ms	Tone Standard	United St.
G.722 Timestamps	160/20m	G.723.1 Bit Rate	6.3kb/s
Speakerphone Volume	5 (1~9)	MIC Input Volume	5 (1~9)
Broadcast Output Volume	5 (1~9)	Signal Tone Volume	4 (0~9)
Enable VAD	<input type="checkbox"/>		

Step 4: Setting Function Key

Set the Function Key as shown below for a quick start. Click **[Apply]** to save this setting.

Type: Hot Key

Number 1: the Function Key will dial to this Number 1.

Number 2: if Number 1 is unavailable, it will be forwarded to Number 2.

Line: working line

Subtype: speed dial

Function Key Settings

Input port Multiplexing as DSS Key2

Key	Type	Number 1	Number 2	Line	Subtype
DSS Key 1	Hot Key	5528		SIP1	Speed Dial
DSS Key 2	None			SIP1	Speed Dial

Advanced Settings

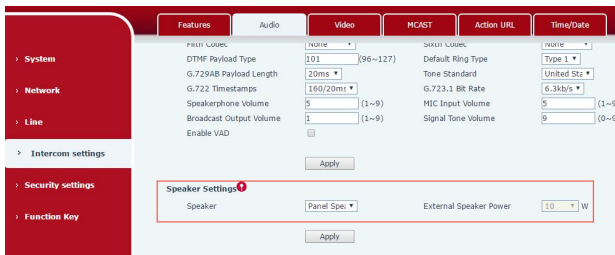
Use Function Key to Answer Enable Speed Dial Hangup

Hot Key Dial Mode Select

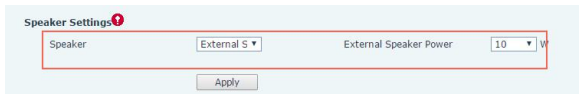
Call Switched Time (5~50)S Day Start Time (00:00~23:59) Day End Time (00:00~23:59)

Step 5: Setting Speaker Settings mode

The Speaker Settings default mode is <panel speaker>. <panel speaker> is the installation of speakers and microphones in a common shell. In order to ensure the speaker's voice quality and avoid damaging the horn, the output power is limited to 10W



If external loud speaker user for broadcasting, It can be adjusted to the <external speaker> mode



At this time, we can choose 10W / 20W / 30W audio output power, we need to match the corresponding power supply, for example:

Input Power	Audio output	Speaker Type
POE	10W	10W/4 Ω
12V/2A DC	10W	10W/4 Ω
18V/2A DC	20W	20W/4 Ω
24V/2A DC	30W	30W/4 Ω

Step 6: Set the camera (if not connected can skip)

The original camera does not need to set up, connected to the device ⑨ black RJ45 network port and restart the device to wait 1 minute, the camera automatically connected successfully. To connect a non-original camera, insert the camera into another LAN or LAN port. Configure the following parameters and click **[Apply]**.

Connection mode: select external, click **[Apply]**, restart the device.

User name: external camera login required account.

Password: external camera login password required.

Camera type: select the camera manufacturers.

IP address: IP address of the camera, please use the camera matching scan tool to obtain the IP address.

Port: camera port number.

RTSP information: click **[Apply]**, the connection automatically shows the camera does not show the reverse.

Preview: copy and paste the main stream or sub-stream Url into the VLC player, or click **[Preview]** to display the current camera video.

The screenshot displays the Fanvil web interface with a navigation menu on the left and a configuration panel on the right. The navigation menu includes System, Network, Line, Intercom settings, Security settings, and Function Key. The configuration panel is titled 'Ip Camera Connect Settings' and includes the following sections:

- Connect Mode:** A dropdown menu set to 'External' and an 'Apply' button.
- Ip Camera Settings:** Fields for Position, User (admin), Password, Ip Camera Brand (XHI), IP (172.18.3.64), and Port (554), with an 'Apply' button.
- RTSP Information:** Fields for Main Stream Url and Sub Stream Url, both showing the URL 'rtsp://172.18.3.64:554/user=admin&password=&channel=1&stream=0.sdp?real_stream', with 'Preview' buttons.

Information on this document is subject to change without notice. Fanvil makes no warranties with respect to this document, due to misuse. This document is caused by indirect or incidental damages, Fanvil does not assume any responsibility.

For more product information, please visit www.fanvil.com

