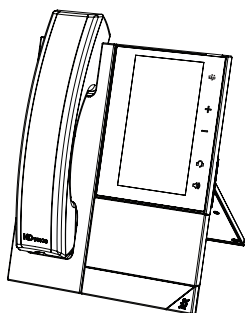
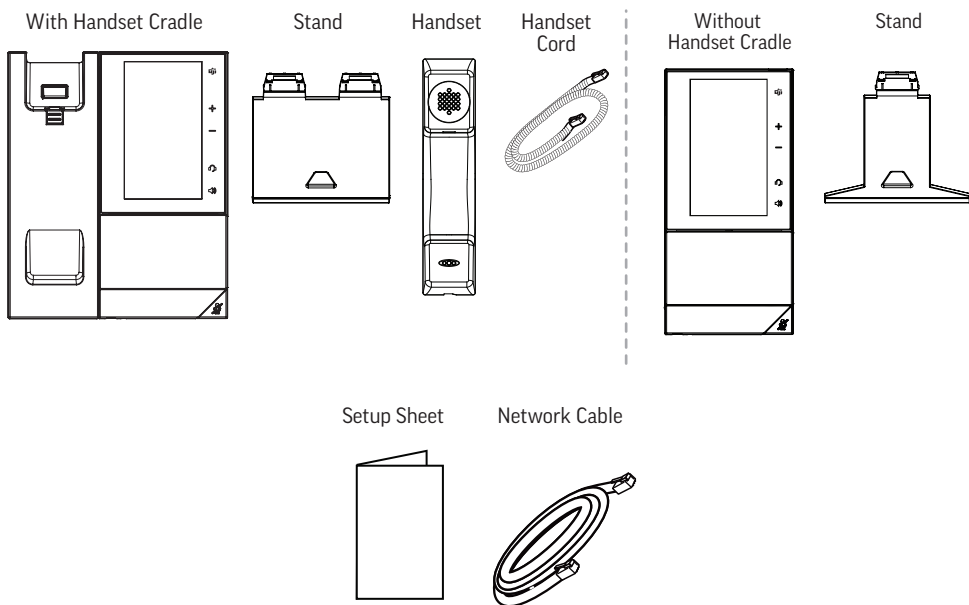


# Poly CCX 500 Business Media Phone



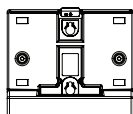
## Package Contents



## Optional Accesories



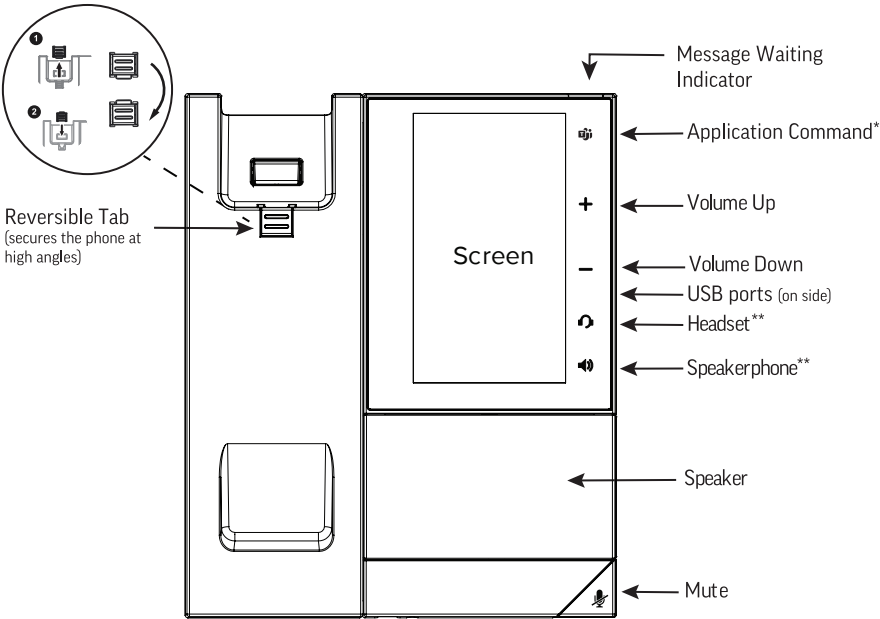
AC Power Adapter  
(varies by region)



Wallmount

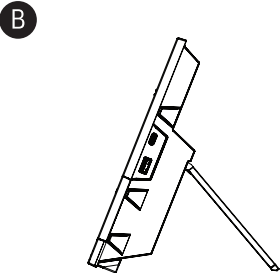
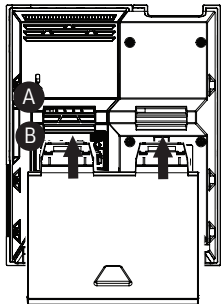
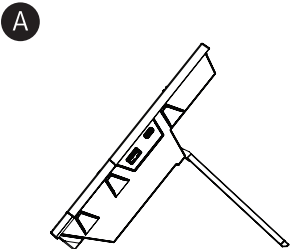
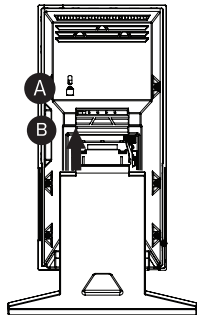
For more information on optional accessories, contact your reseller.

# Features

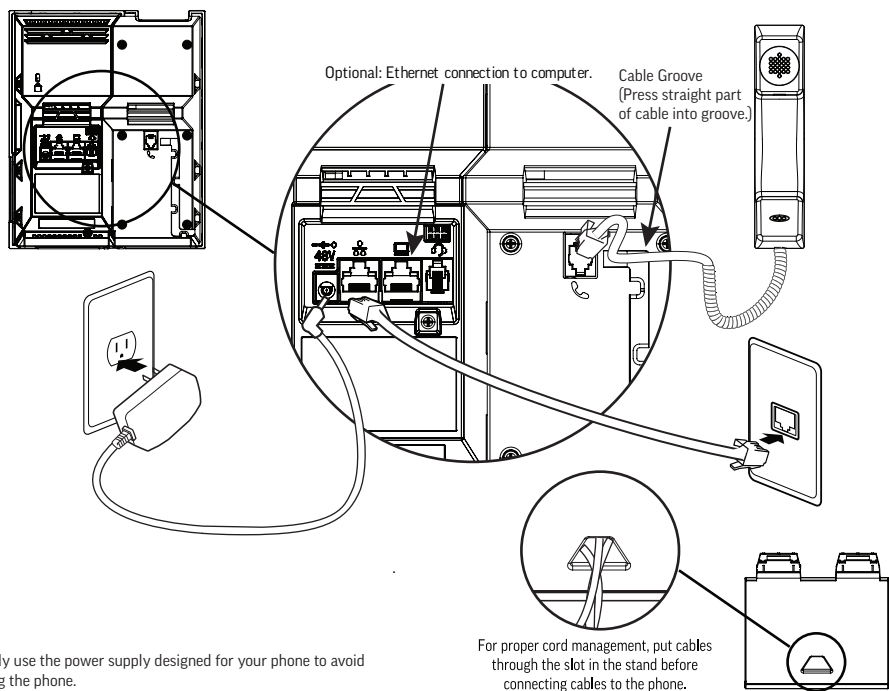


\*Icon displays only when the phone is powered on and the service is available. Icon may vary.  
\*\* Icon displays when the phone is powered on.

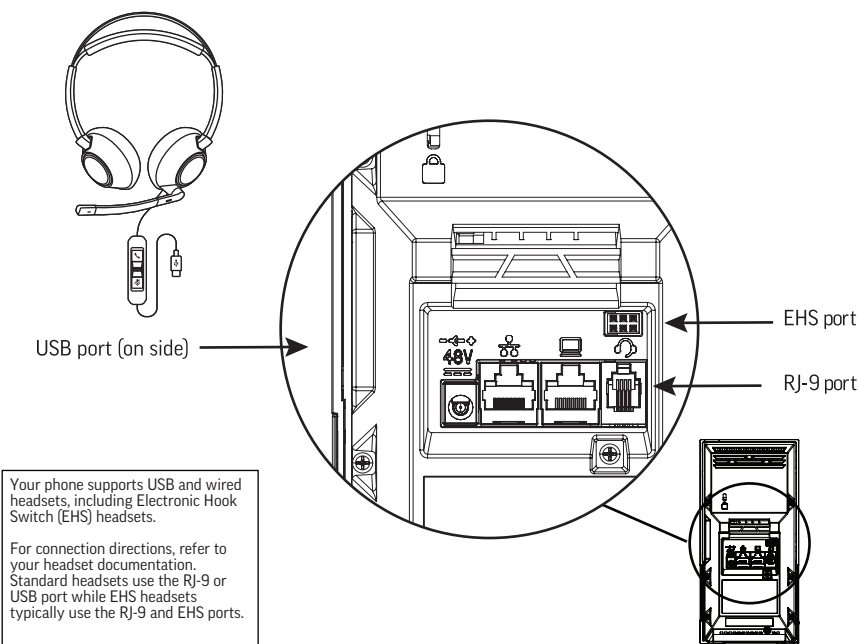
# Connect Desktop Stand



# Connect Cables



# Connect Optional Headset





BY USING THIS PRODUCT, YOU ARE AGREEING TO THE TERMS OF THE END USER LICENSE AGREEMENT (EULA) AT: <http://documents.polycom.com/indexes/licenses>. IF YOU DO NOT AGREE TO THE TERMS OF THE EULA, DO NOT USE THE PRODUCT, AND YOU MAY RETURN IT IN THE ORIGINAL PACKAGING TO THE SELLER FROM WHOM YOU PURCHASED THE PRODUCT.

Refer to the Limited Warranty section of the Product Warranty Guide found in Services at <http://support.polycom.com/>

**ENERGY STAR®:**



Backlight intensity and timeout can be adjusted in basic user settings menu. By default, after the phone is idle for 40 seconds, the backlight dims. The backlight automatically turns on with any phone activity.

**Polycom Documentation**  
[www.polycom.com/support](http://www.polycom.com/support)



© 2019 Plantronics, Inc. All rights reserved. Poly, the propeller design, and the Poly logo are trademarks of Plantronics, Inc. All other trademarks are the property of their respective owners.

**Contact Information:**

Contact your Authorized Reseller for Assistance.

[www.poly.com](http://www.poly.com)

Plantronics, Inc. 345 Encinal Street Santa Cruz, California 95060

1725-49715-001A

