

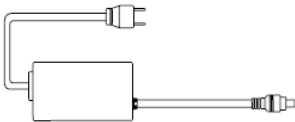
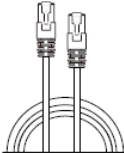

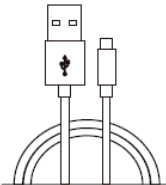




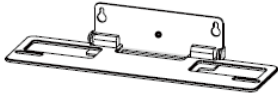
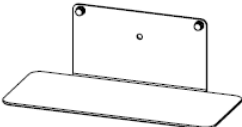


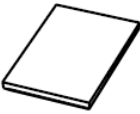


MeetingBar A50 Deployment & Connection

Package Contents

 **TIP**
For the MeetingBar A50 unboxing video, please refer to [Video: MeetingBar A50 Unboxing](#).

								
MeetingBar A50	(3.5 m, 11.48 ft) Power Adapter (48V/1.36A)	(3 m, 9.84 ft) CAT5e UTP (RJ45 - RJ45) Cable	(1.8 m, 5.91 ft) HDMI 2.0 Cable	(2.5m, 8.20ft) USB 3.0 (A - B) Cable	× 2 φ 6*30 mm Polyamide	× 2 T4*30 mm	× 3 1/4 inch*12 mm	× 1 1/4 inch*13 mm
								
Mounting Bracket	Table-top Stand	Cable Cover	(20 * 200 mm) Cable Ties	Quick Start Guide				

Optional Packages

A



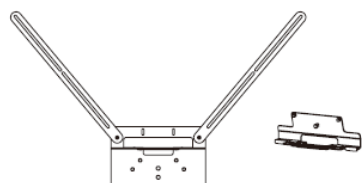
VCR11 and
AAA Battery × 2

B



CTP25

C



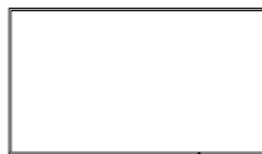
VB-TVMount-01

i Exclusively designed for the A50, compatible with most displays.

D

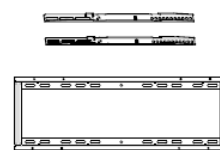
i We recommend using these three accessories together.

①



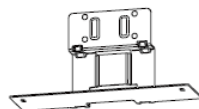
MeetingDisplay 65/75/86

②



MD-Wallmount

③



MD-AVBracket-L

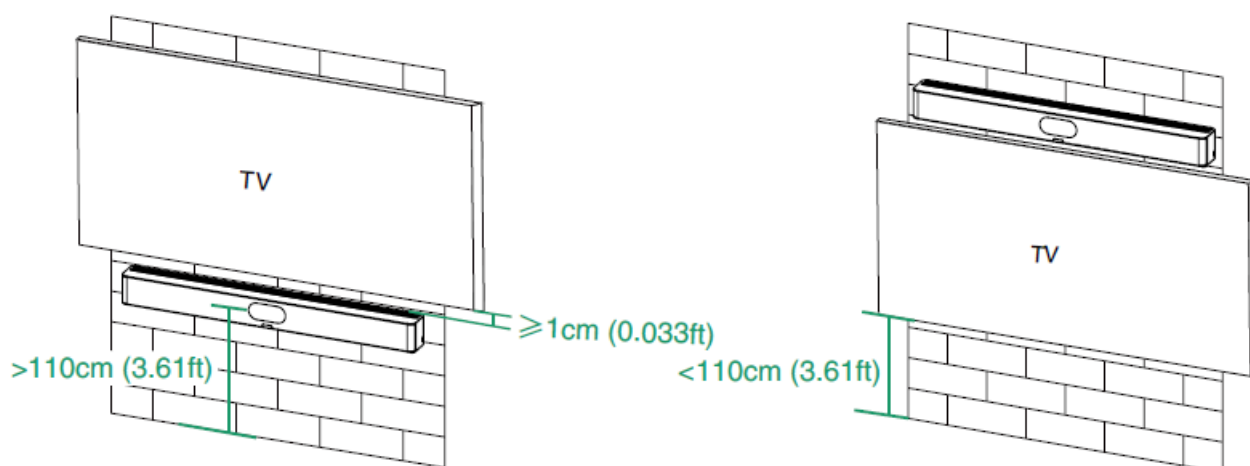
*The MD-AVBracket-L is compatible only with the Yealink MeetingDisplay 75/86.

Install MeetingBar A50

Mount on a Wall

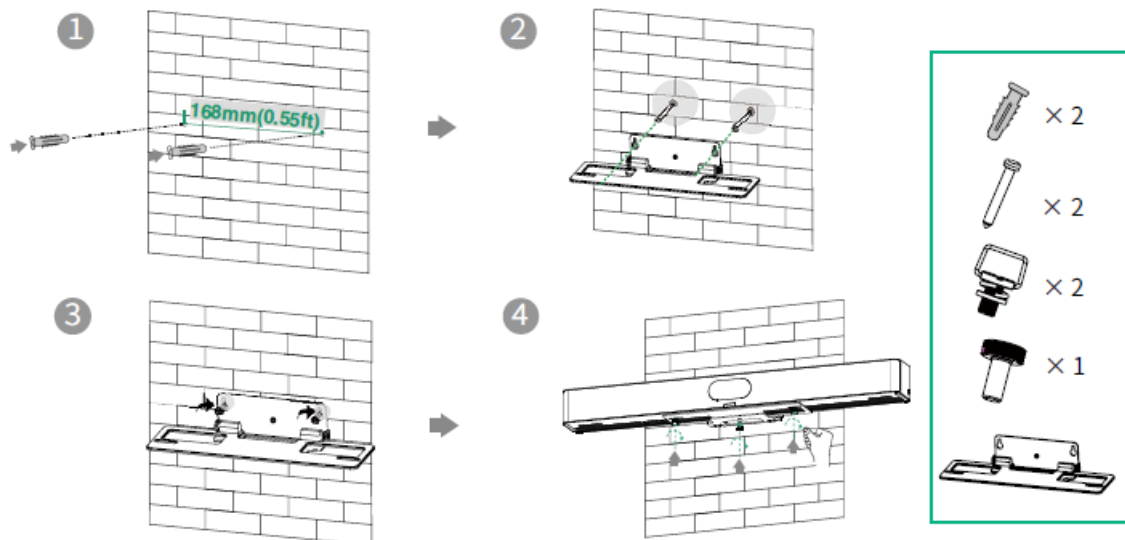
1. Determine A50 Position

The mounting height affects your camera view. The recommended installation height is 110 cm above the ground, and the reserved distance between A50 and TV should be greater than 1 cm.



2. Mount the A50 to the Wall

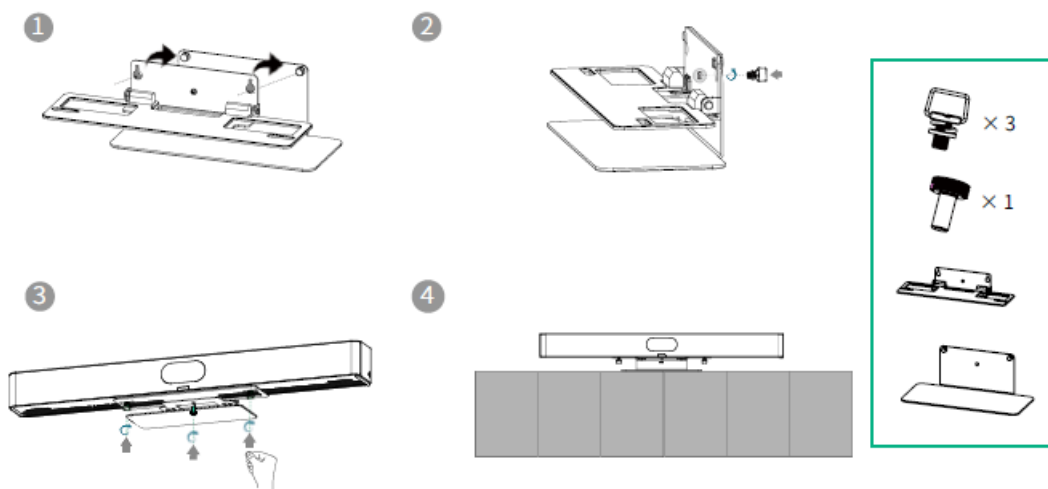
- Hole depth: 30 mm (0.098ft), hole diameter: 6 mm (0.02ft)



Mount on Table-Top Stand

NOTE

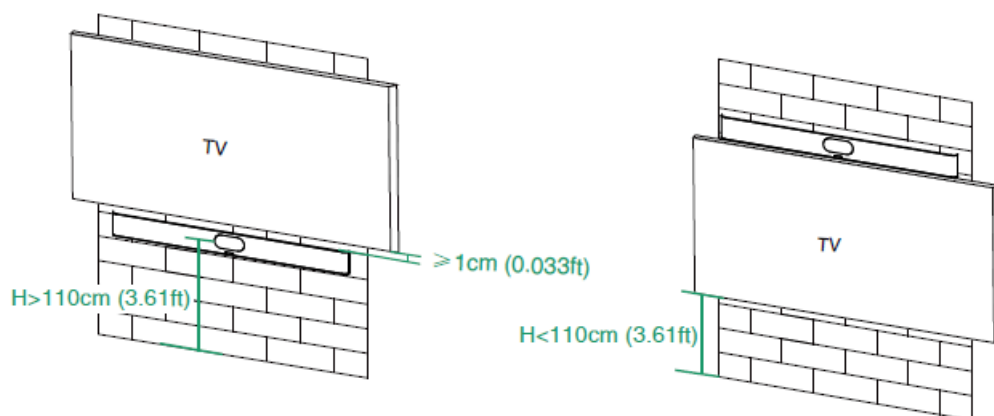
Refer to [Adjust Camera Tilt](#) section for bracket adjustment.



Embed in the Wall

NOTE

- The mounting height affects your camera view. The recommended installation height is 110 cm above the ground.
- Keep the front of the A50 flush with the wall surface.
- The recommended on the left, right, and top sides of the A50 is less than 0.5 cm.
- Leave a 5 ± 0.5 cm distance between the back of the A50 and the wall surface for cable connections.

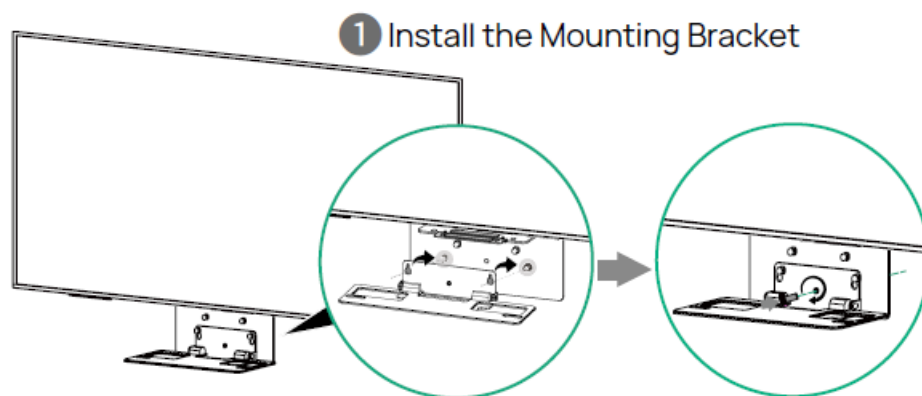


Mount on the VB-TVMount-01 (optional)

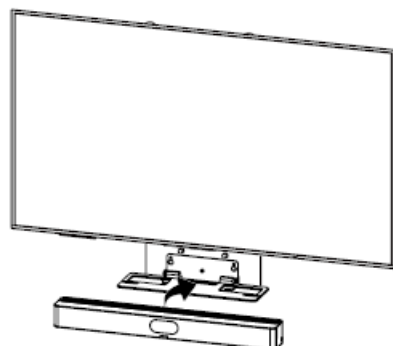
The installation method for the top and bottom is the same. The following takes the bottom installation as an example.

NOTE

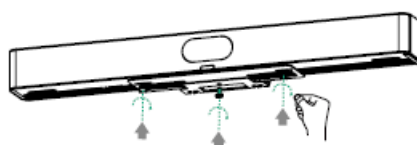
You need to purchase VB-TVMount-01. For installation, refer to [VB-TVMount-01 Installation](#).



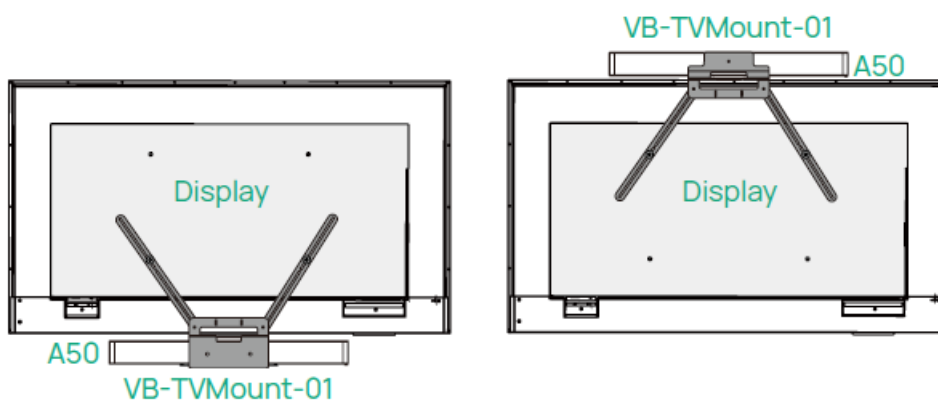
2 Place the A50



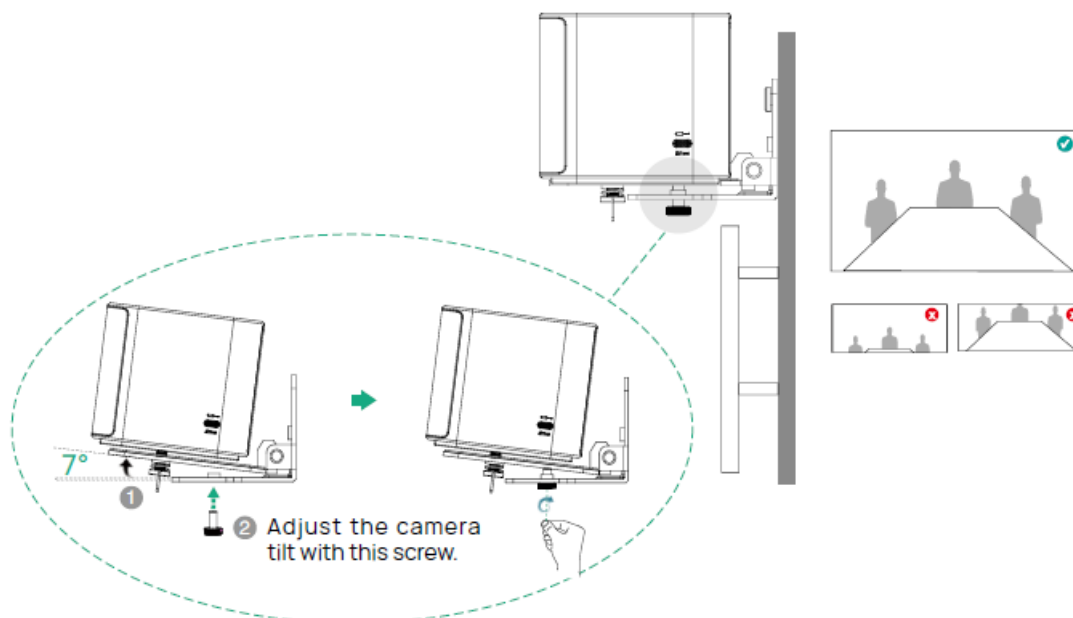
3 Fix the A50



The top and bottom installation effect:



Adjust Camera Tilt



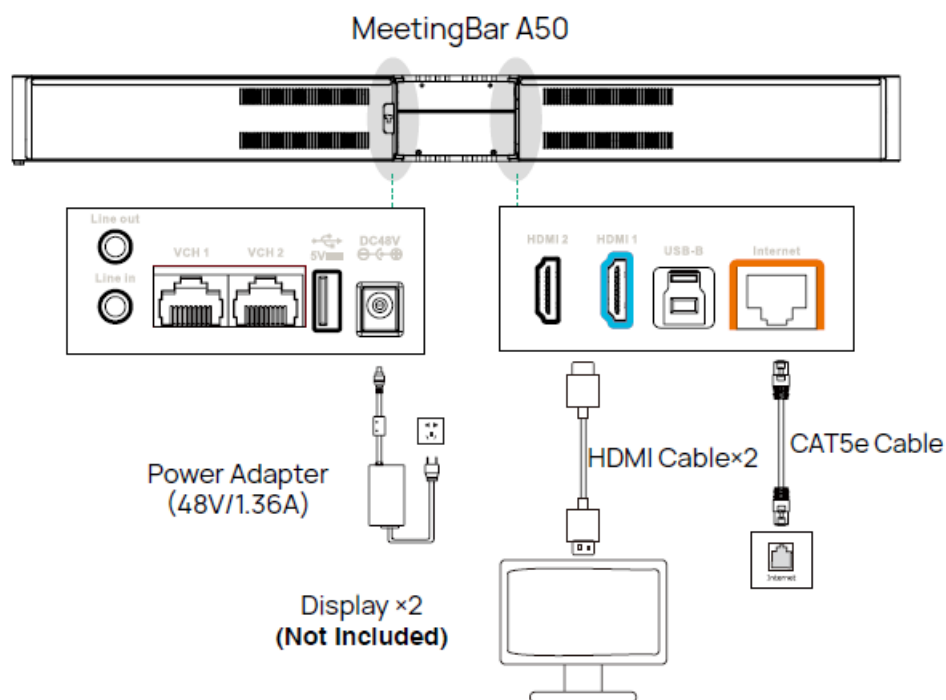
Understand Each Port

Refer to [Hardware Introduction](#) for details.

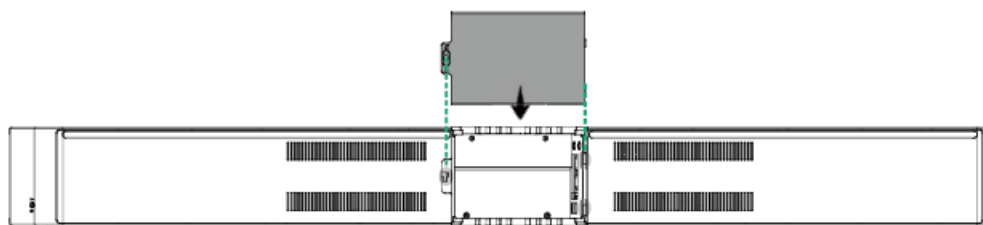
Connect/Pair MeetingBar A50

NOTE

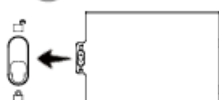
- For connecting Yealink CTP Touch Panel:
 - For optimal pairing, connect Yealink MeetingBar and then Yealink CTP Touch Panel.
 - The Yealink CTP Touch Panel can be powered via PoE.
 - Yealink MeetingBar and Yealink CTP Touch Panel must be on the same LAN or connected to the same Wi-Fi.
- If you only use one display, please connect to the HDMI 1 port.

**Assemble Cable Cover**

- 1** Align the slot and fit the cable cover into the slots.



- 2** Fixing the Cable Cover.



Understand the LED Status

MeetingBar LED Status	Description
Off	The device is not powered on.
Solid green	<ul style="list-style-type: none">• The device is initializing.• The device is working (calling/sharing content).
Flash green	The device has incoming calls.
Solid red	The device is muted.
Solid orange	The device is idle.
Flash orange	The device is upgrading firmware.

Next Step

When deployment and connection is complete, refer to [Quick Setup](#) to complete the setup wizard.