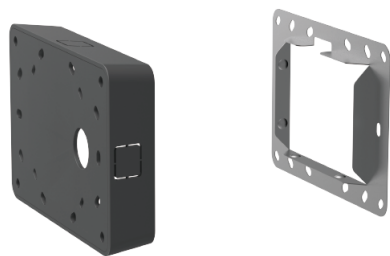
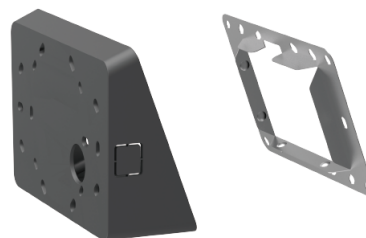


Yealink RoomPanel Mount Kits Datasheet

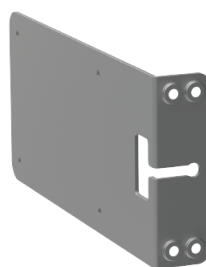
Introduction



0° Mounting Bracket



20° Mounting Bracket



Mullion Mount Bracket

TheRoomPanel Mount Kits are respectively used for deployment:

1. 0° Mounting Bracket: mount the RoomPanel vertically on the wall
2. 20° Mounting Bracket: the RoomPanel is mounted on the wall at an angle of 20°
3. Mullion Mount Bracket: mount the RoomPanel vertically on the door frame

Specification

Parameter	Description
Physical Feature	0° Mounting Bracket: <ul style="list-style-type: none">• Dimension (W × D × H): 150 × 103 × 27.8 mm

	<ul style="list-style-type: none">• Carton Meas: 540 × 311 × 218mm• N.W/CTN: 7.9kg• G.W/CTN: 8.55kg 20° Mounting Bracket: Dimension (W×D×H): 152 × 116 × 56 mm Mullion Mount Bracket: Dimension (W×D×H): 200 × 93 × 28.5 mm
--	--

Device Compatibility

The Mount Kits supported by the device are as follows:

Device Name	Mount Kits
RoomPanel、RoomPanel E2	√

How to Use

Refer to [RoomPanel Deployment and Connection](#).