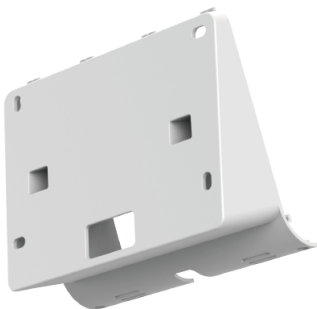


Yealink RoomPanel Plus Mount Kits Datasheet

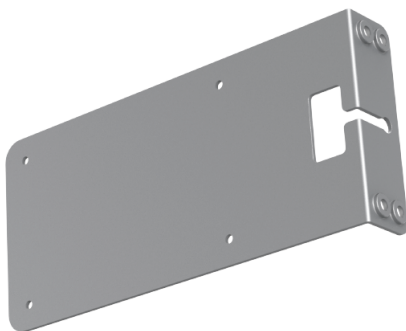
Introduction



0° Mounting Bracket



20° Mounting Bracket



Mullion Mount Bracket

TheRoomPanel Plus Mount Kits are respectively used for deployment:

- 1. 0° Mounting Bracket: mount the RoomPanel Plus vertically on the wall
- 2. 20° Mounting Bracket: the RoomPanel Plus is mounted on the wall at an angle of 20°
- 3. Mullion Mount Bracket: mount the RoomPanel Plus vertically on the door frame

Specification

Parameter	Description
Physical Feature	0° Mounting Bracket:

	<ul style="list-style-type: none">• Dimension (W×D×H): 136 × 116 × 22 mm• Carton Meas: 405 × 315 × 245mm• N.W/CTN: 6.55kg• G.W/CTN: 7.14kg 20° Mounting Bracket: Dimension (W×D×H): 136 × 116 × 62 mm Mullion Mount Bracket: Dimension (W×D×H): 200 × 93 × 28.5 mm
--	--

Device Compatibility

The Mount Kits supported by the device are as follows:

Device Name	Mount Kits
RoomPanel Plus、RoomPanel Plus E2	√

How to Use

Refer to [RoomPanel Plus Deployment and Connection](#).