

# Yealink



Yealink Documentation  
support.yealink.com

# DECT IP Phone W79P Pro



**Quick Start Guide (V1.0)**

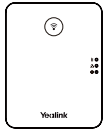
# Table of Contents

English .....	1
Deutsch .....	5
Español .....	9
Français .....	13

# W79P Pro Package Contents



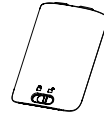
W59R Pro Handset



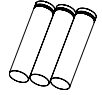
W70B Base Station



2 Power Adapters



Battery Cover



Battery



Decorative Cover



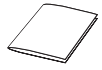
Charging Cradle



Ethernet Cable



Base Stand



Quick Start Guide

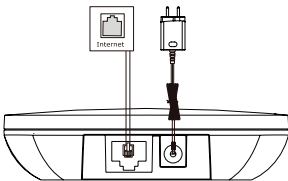
**Note:**

1. Yealink W79P Pro DECT IP phone consists of one W70B base station and one W59R Pro handset.
2. We recommend that you use the accessories provided or approved by Yealink.
3. The use of unapproved third-party accessories may result in reduced performance.
4. The appearance of white residue on the product is a normal phenomenon due to the material's characteristics. It does not affect the product's functionality and can be wiped off for normal use.

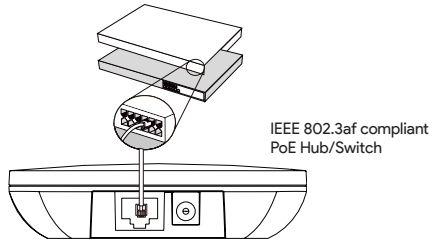
## Assembling the DECT Phone

1. Connect the base station power and the network using method a or method b.

### a. AC Power Option



### b. PoE (Power over Ethernet) Option

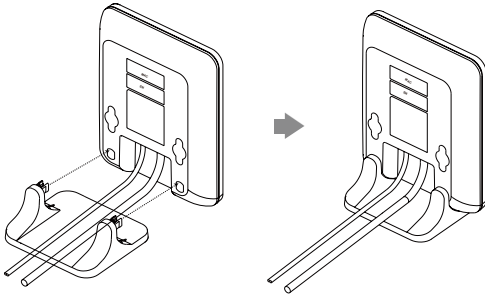


**Note:**

- If you choose method a, use Yealink supplied power adapter (5V/0.6A). A third-party power adapter may damage the base station.
- If you choose method b, you do not need to connect the power adapter. Make sure the hub/switch is PoE-compliant.

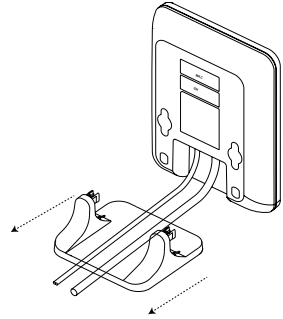
## 2a. (Desktop Installation) Attach and remove the base stand.

### Attach the Base Stand



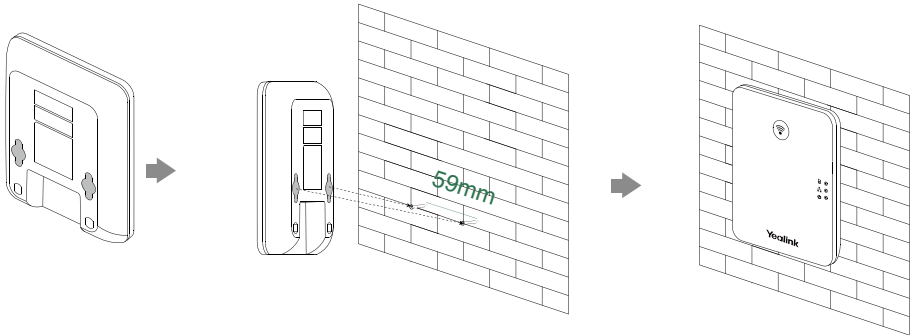
Align the snap-fits with the corresponding holes and push forward, snapping them into the holes.

### Remove the Base Stand

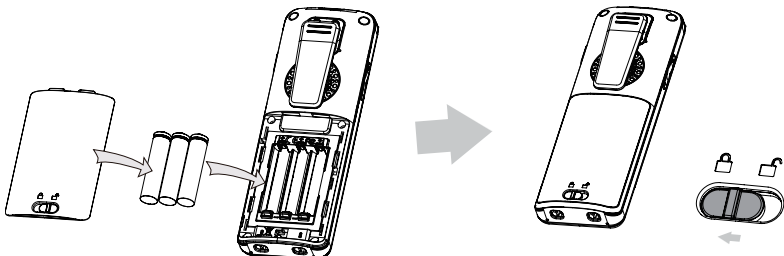


Remove the snap-fits from the holes horizontally.

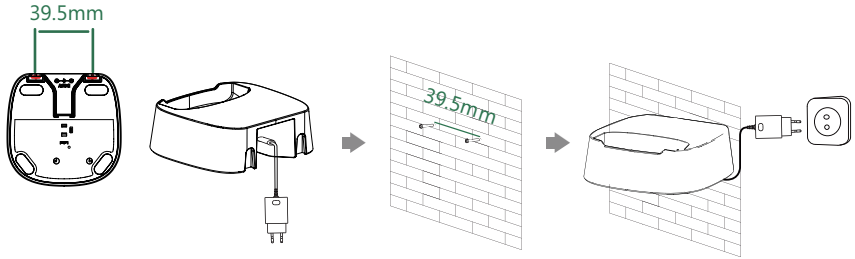
## 2b. (Wall-Mount Installation) Attach the base station.



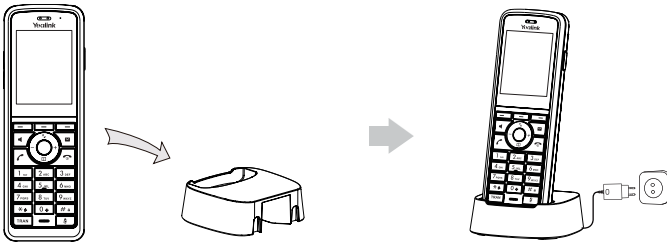
## 3. Insert the battery into the handset.



#### 4. (Optional) Mount the charging cradle to the wall.



#### 5. Connect the charging cradle and charge the handset.



**Note:**

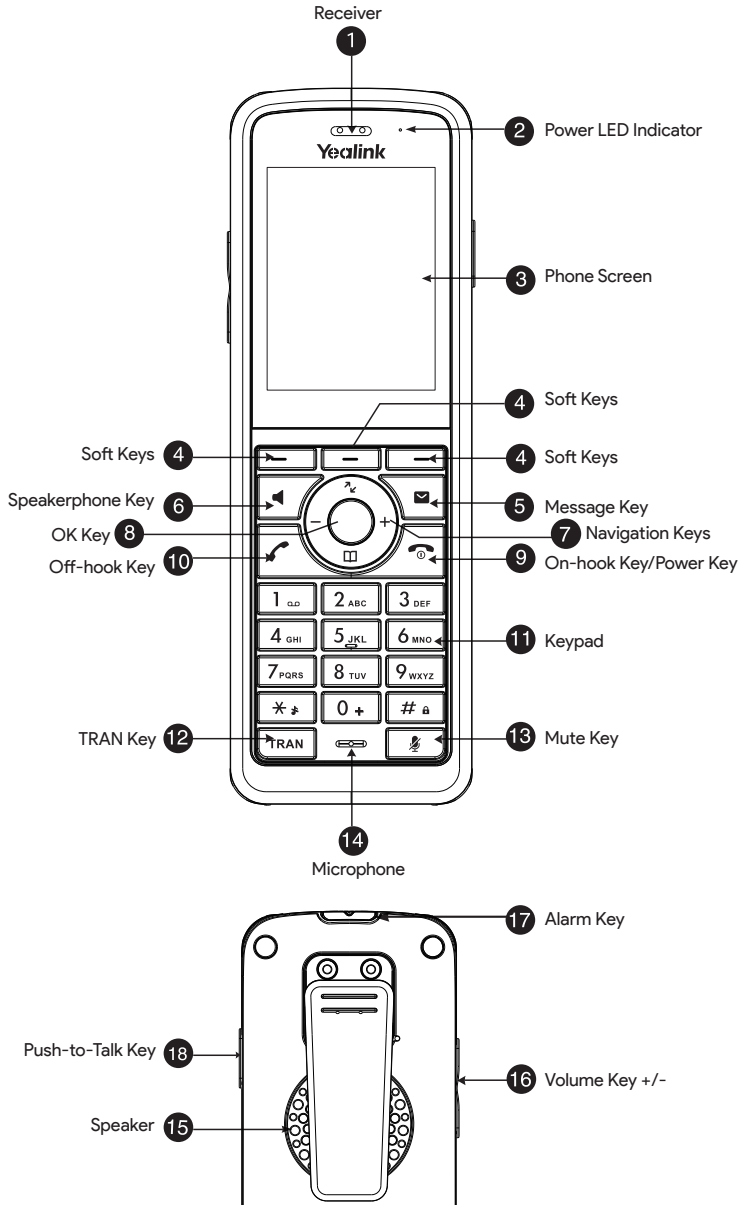
- Use Yealink-supplied power adapter (5V/0.6A). A third-party power adapter may damage the handset.
- Check the charging status on the top-right corner of the LCD screen.

### Technical Specifications

Item	Specification
Frequency band	1880-1900 MHz (Europe), 1920-1930 MHz (America), 1910-1920 MHz (Brazil)
Battery type	3 × 3.7V 350mAh(1.295Wh), Lithium-ion
Charger	DC 5V/0.6A Input
Power adapter	Input: 100-240V~50/60Hz 0.2A Output: 5V 0.6A 3.0W

For more information, see the specific user guide or contact your system administrator.

# Hardware Component Instructions



## W79P Pro Verpackungsinhalt



W59R Pro Mobilteil



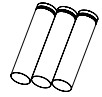
W70B Basisstation



Zwei Netzteile



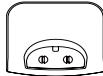
Batterieabdeckung



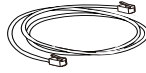
Batterie



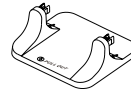
Dekorative Abdeckung



Ladestation



Ethernet-Kabel



Basisständer



Kurzanleitung

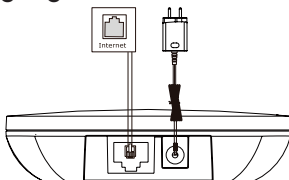
### Hinweis:

1. Das Yealink DECT IP phone W79P Pro besteht aus einer W70B Basisstation und einem W59R-Pro-Mobilteil.
2. Wir empfehlen, die von Yealink bereitgestellten oder genehmigten Zubehörteile zu verwenden.
3. Die Verwendung von nicht genehmigten Zubehörteilen von Drittanbietern kann zu einer verminderten Leistung führen.
4. Das Auftreten von weißen Rückständen auf dem Produkt ist ein normales Phänomen aufgrund der Materialeigenschaften. Es beeinträchtigt die Funktionalität des Produkts nicht und kann für den normalen Gebrauch abgewischt werden.

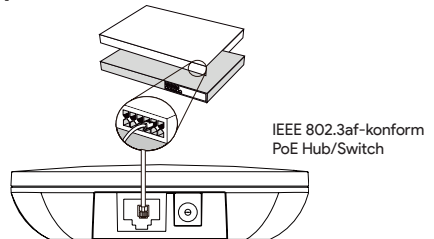
## Das DECT-Telefon zusammensetzen

### 1. Stellen Sie die Basisstation Stromversorgungs- und Netzwerkverbindung anhand Methode a oder Methode b her.

#### a. Option Wechselstromversorgung



#### b. Option Power-over-Ethernet (PoE)

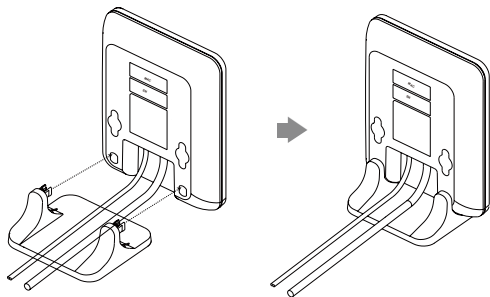


### Hinweis:

- Wenn Sie sich für Methode a entscheiden, verwenden Sie das von Yealink mitgelieferte Netzteil (5V/0,6A). Ein Netzteil eines Drittanbieters kann das Basisstation beschädigen.
- Wenn Sie sich für Methode b entscheiden, müssen Sie das Netzteil nicht anschließen. Stellen Sie sicher, dass der Hub/Switch PoE-konform ist.

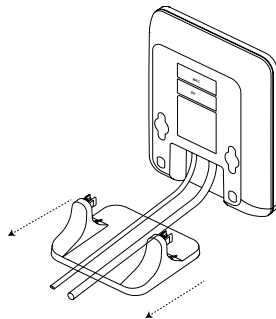
## 2a. (Installation auf einer Arbeitsfläche) Anbringen und Entfernen des Standfußes.

### Anbringen des Standfußes



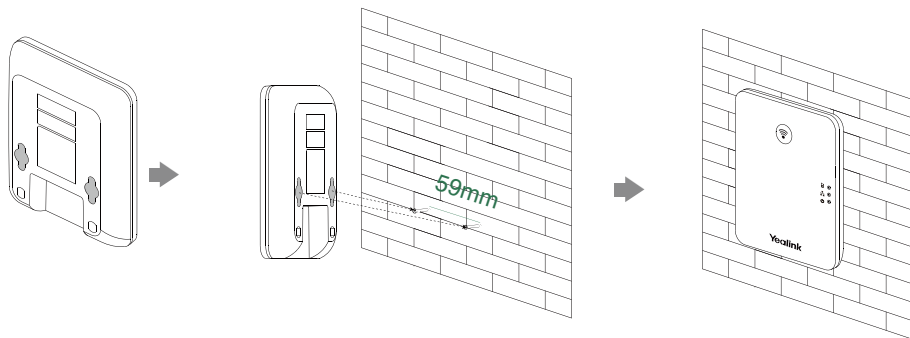
Richten Sie die Einrasthaken an den entsprechenden Öffnungen aus und drücken Sie diese in die Öffnungen hinein bis sie einrasten.

### Entfernen des Standfußes

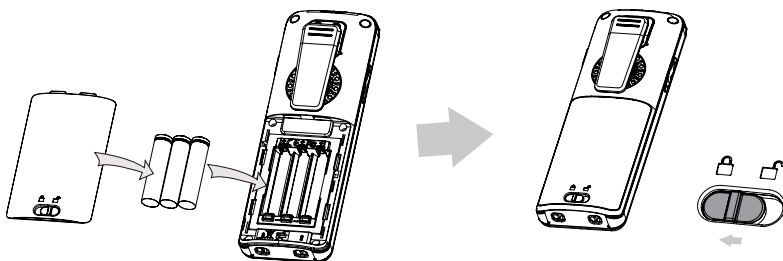


Entfernen Sie die Einrasthaken indem Sie sie in horizontaler Richtung aus den Öffnungen herausziehen.

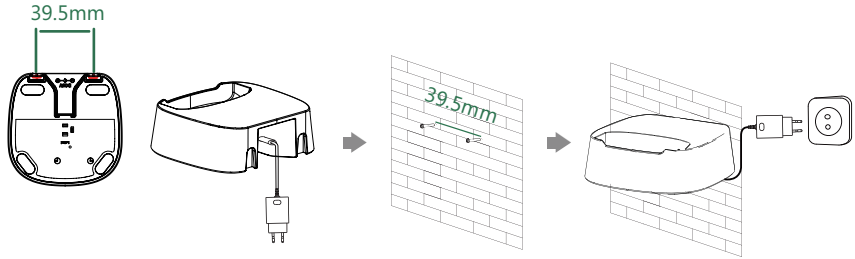
## 2b. (Wandmontage) Anbringen der Basisstation



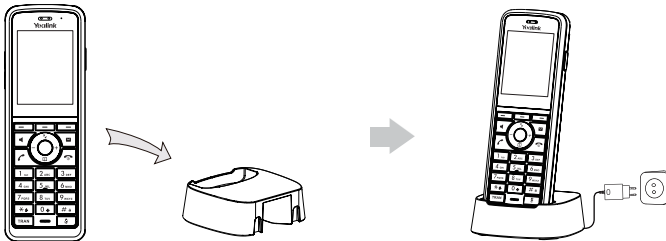
## 3. Legen Sie die Batterie in das Mobilteil ein.



#### 4. (Optional) Befestigen Sie die Ladestation wie unten dargestellt an der Wand:



#### 5. Verbinden Sie die Ladestation und laden Sie das Mobilteil auf.



#### Hinweis:

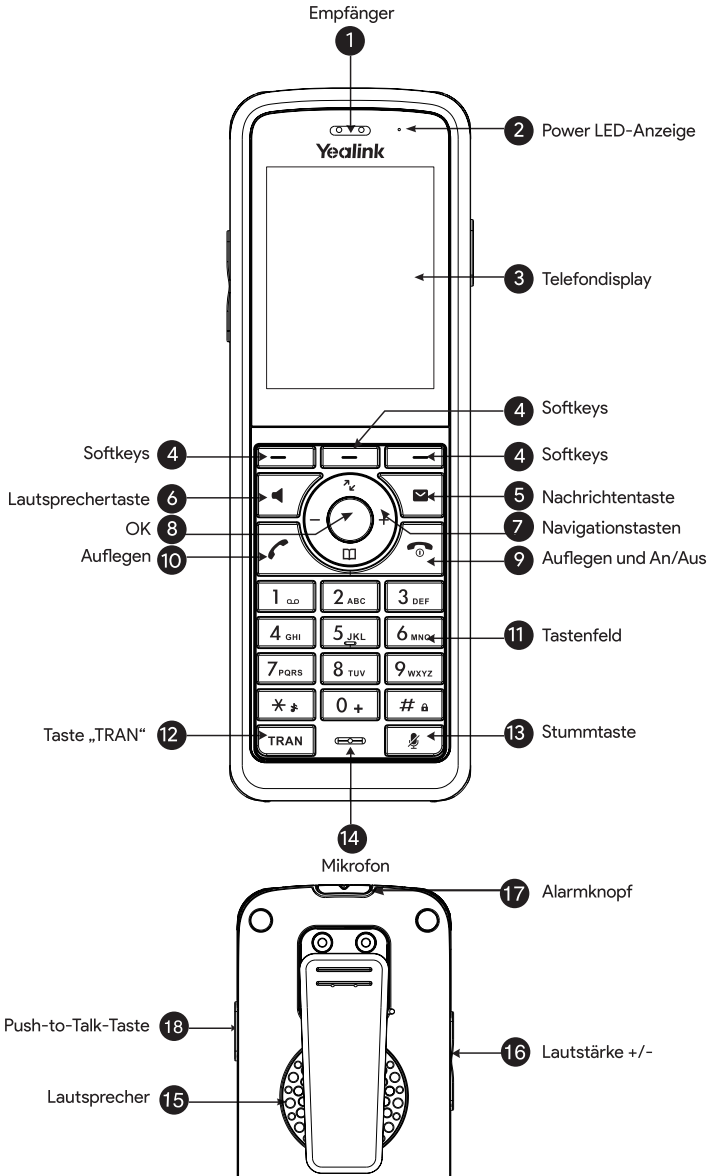
- Verwenden Sie das von Yealink mitgelieferte Netzteil (5V/0.6A). Ein Netzteil eines Drittanbieters kann das Mobilteil beschädigen.
- Der Ladestatus des Mobilteils wird oben rechts im Display angezeigt.

### Technische Spezifikationen

Artikel	Spezifikationen
Frequenzband	1880-1900 MHz (Europa), 1920-1930 MHz (Amerika), 1910-1920 MHz (Brasilien)
Akkutyp	3 × 3,7V 350mAh (1,295Wh), Lithium-Ionen
Ladegerät	DC 5 V/0,6 A Eingang
Netzteil	Eingang: 100-240 V ~ 50/60 Hz 0,2 A Ausgang: 5 V 0,6 A 3,0 W

Weitere Informationen finden Sie in der entsprechenden Bedienungsanleitung oder wenden Sie sich an Ihren Systemadministrator.

# Anleitung für die Hardware-Komponente



## W79P Pro Contenido de la caja



Auricular W59R Pro



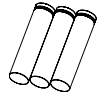
W70B Base



Dos alimentadores AC/  
DC



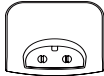
Tapa de batería



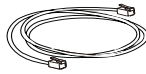
Batería



Funda decorativa



Base de carga



Cable Ethernet



Soporte



Guía de inicio rápido

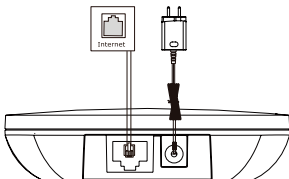
### Nota:

1. W79P Pro Teléfono Inalámbrico DECT IP de Yealink consiste en una W70B base y un Handset W59R Pro.
2. Recomendamos que utilice los accesorios proporcionados o aprobados por Yealink.
3. El uso de accesorios de terceros no aprobados puede resultar en un rendimiento reducido.
4. La aparición de residuos blancos en el producto es un fenómeno normal debido a las características del material. No afecta la funcionalidad del producto y se puede limpiar para su uso normal.

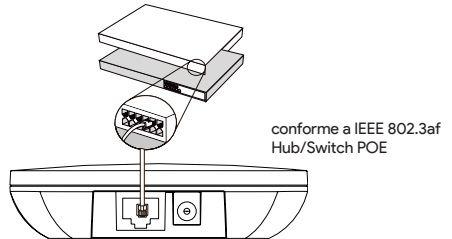
## Instalación del teléfono DECT

### 1. Conecte la estación base a la red y la alimentación de una de las dos formas posibles:

#### a. Opción Alimentador



#### b. Opción PoE (Power over Ethernet)

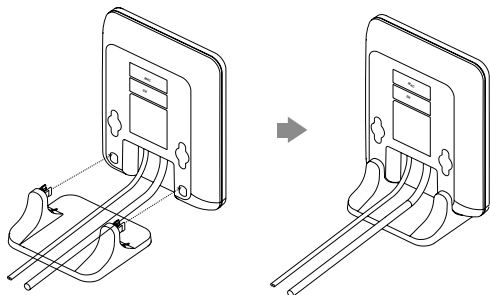


### Nota:

- Utilice siempre el adaptador original de Yealink (5V/0.6A). El uso de un adaptador de terceros podría dañar la estación base.
- Si se proporciona la alimentación en línea (PoE), no necesita conectar el alimentador. Asegúrese de que el hub/switch sea compatible con PoE.

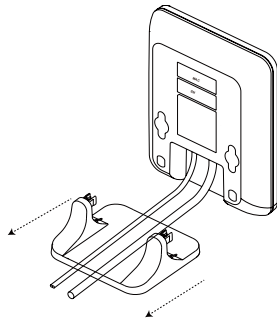
## 2a. (Instalación Sobremesa) Conectar y desconectar el soporte.

### Conectar el Soporte



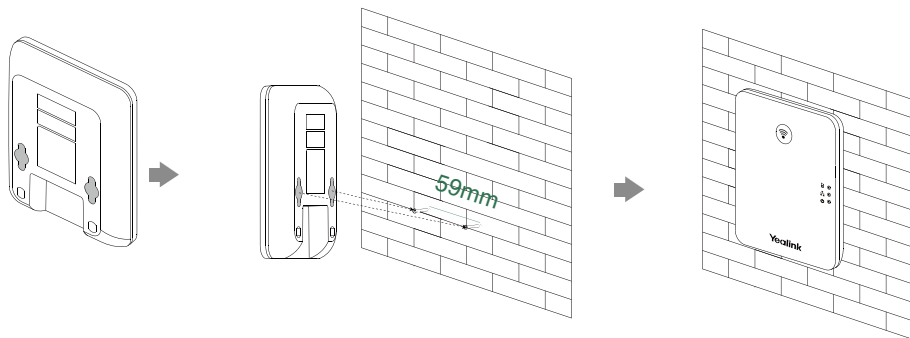
Alinear pestañas con agujeros correspondientes e empujar hasta encajar las pestañas

### Desconectar el Soporte

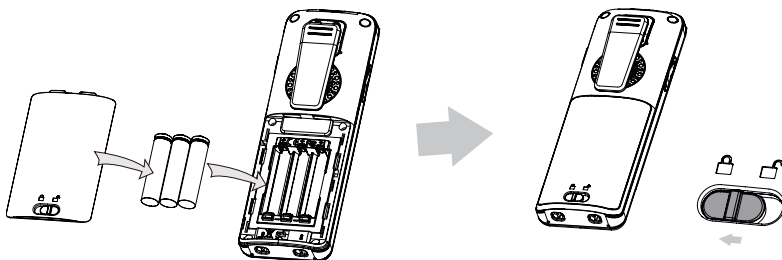


Tirar horizontalmente hasta soltar las pestañas.

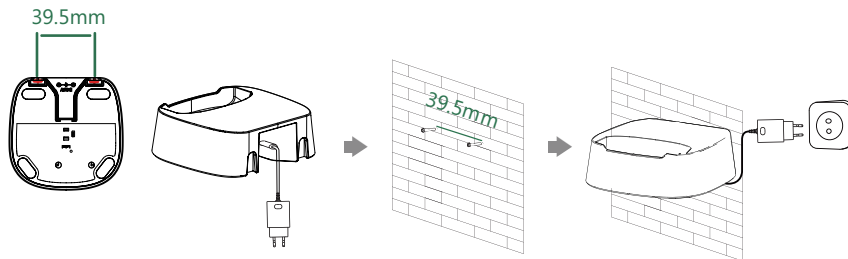
## 2b. (Montaje en la pared) Conectar la estación base.



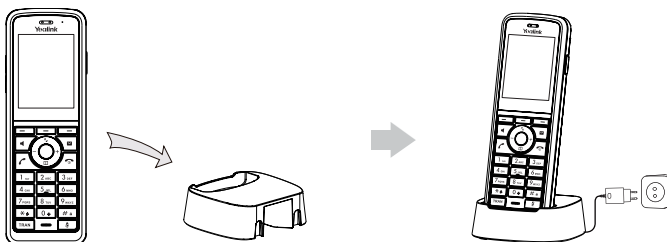
## 3. Introduzca las baterías en el teléfono:



#### 4. (Opcional) Coloque la base de carga en la pared.



#### 5. Conecte la base de carga y cargue el teléfono.



#### Nota:

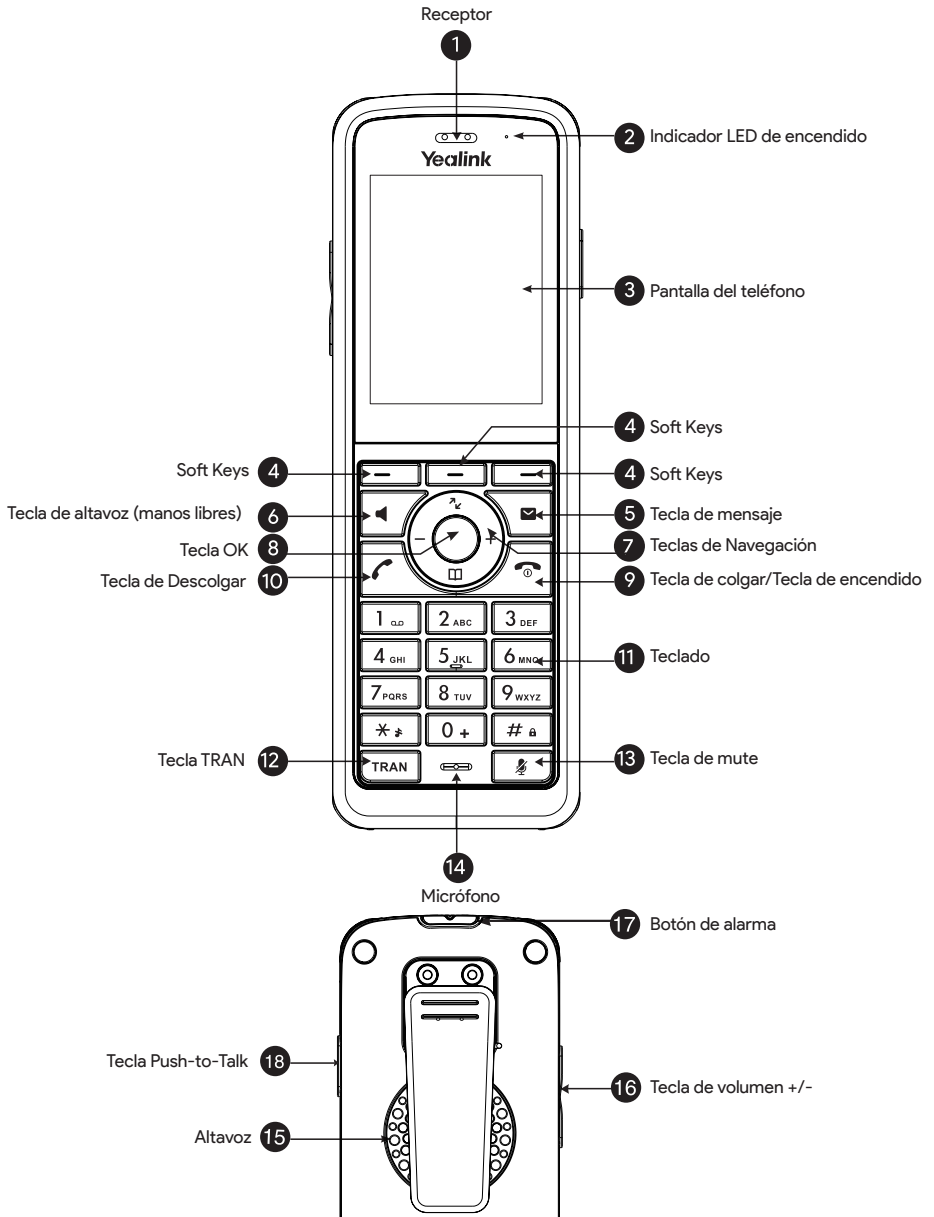
- El teléfono debe usarse únicamente con el alimentador original (5V/0.6A). El uso de un adaptador de terceros podría dañar el teléfono.
- El estado de carga del teléfono se indica en la esquina superior derecha de la pantalla LCD.

### Especificaciones técnicas

Artículo	Especificación
Banda de frecuencia	1880-1900 MHz (Europa), 1920-1930 MHz América), 1910-1920 MHz (Brasil)
Tipo de Batería	13 x 3,7V 350mAh (1,295Wh), Ion de litio
Cargador	Entrada DC 5V / 0.6A
Adaptador de corriente	Entrada: 100-240V ~ 50/60Hz 0.2A Salida: 5V 0.6A 3.0W

Para obtener más información, consulte la guía del usuario específica o póngase en contacto con el administrador del sistema.

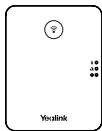
# Instrucciones de Componentes de Hardware



## W79P Pro Contenu de la boîte



Combiné W59R Pro



W70B Base



Deux adaptateurs d'alimentation



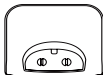
Batterie couvercle



Batterie



Couvercle décoratif



Socle de chargeur



Câble Ethernet



Socle de base



Guide de démarrage rapide

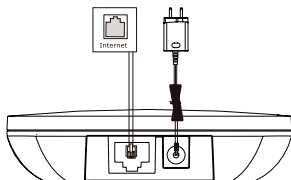
### Remarque :

1. Le Yealink W79P Pro inclut une W70B base et un combiné DECT W59R Pro.
2. Nous vous recommandons d'utiliser les accessoires fournis ou approuvés par Yealink.
3. L'utilisation d'accessoires tiers non approuvés peut entraîner une réduction des performances.
4. L'apparition de résidus blancs sur le produit est un phénomène normal dû aux caractéristiques du matériau. Cela n'affecte pas la fonctionnalité du produit et peut être nettoyé pour une utilisation normale.

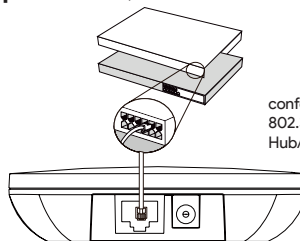
## Montage du téléphone DECT

**1. Procédez à la connexion au réseau et à l'alimentation électrique de la station de base d'une des façons suivantes, comme illustré ci-dessous.**

### A. Option Alimentation secteur



### B. Option PoE (Power over Ethernet)



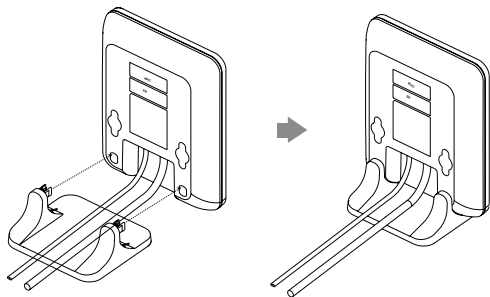
conforme à la norme IEEE  
802.3af  
Hub/Interrupteur PoE

### Remarque :

- Si vous choisissez la méthode a., utilisez l'adaptateur secteur fourni par Yealink (5 V/0,6A). L'utilisation d'un adaptateur tiers est susceptible d'endommager la station de base.
- Si vous choisissez la méthode b., vous n'avez pas besoin de brancher l'adaptateur secteur. Assurez-vous que le commutateur/routeur est compatible PoE.

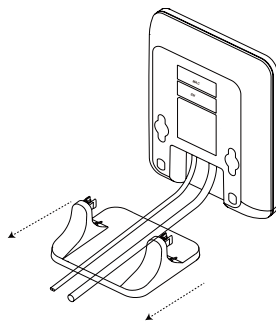
## 2a. (installation de bureau) Attacher et Détacher le socle de la base.

### Attacher le socle de la base



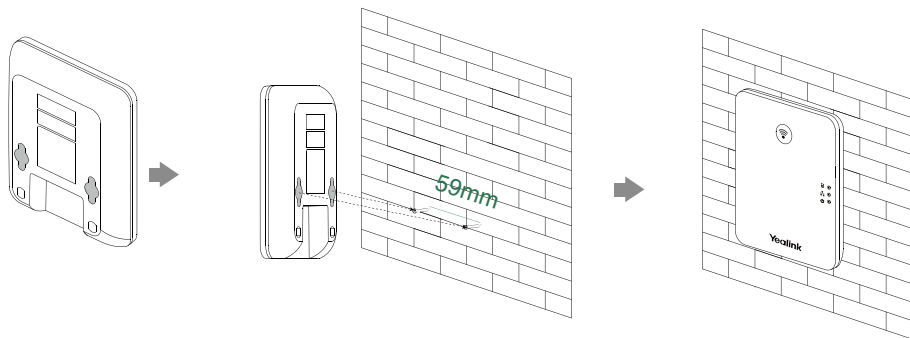
Aligner les crochets avec les trous correspondant et avancer pour les glisser dans les trous

### Détacher le socle de la base

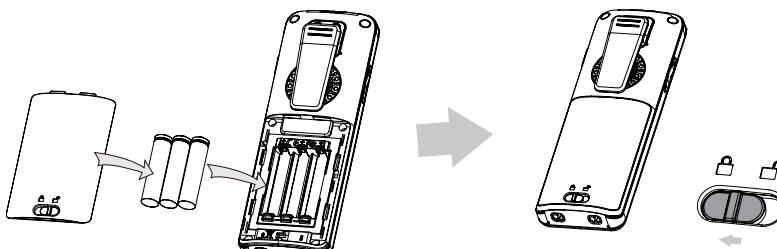


Détacher les crochets des trous horizontalement

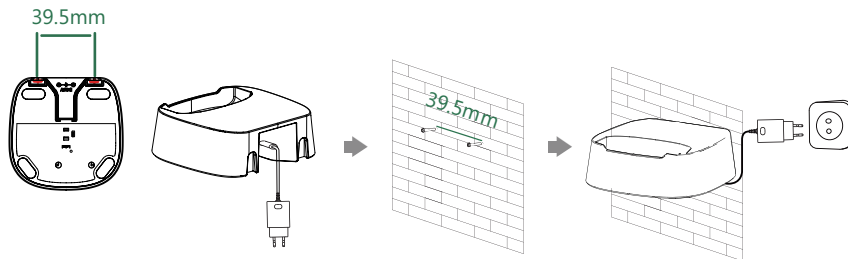
## 2b. (Installation murale) Attacher la base.



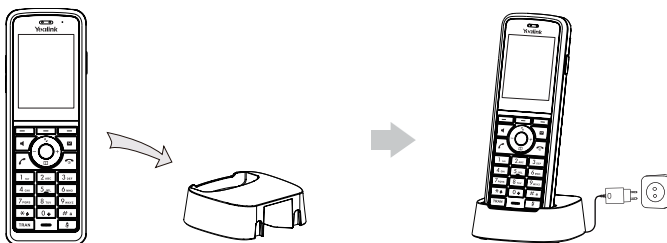
## 3. Insérez les piles dans le combiné.



#### 4. (Facultatif) Montez le socle chargeur au mur.



#### 5. Raccordez le combiné et chargez le combiné.



#### Remarque :

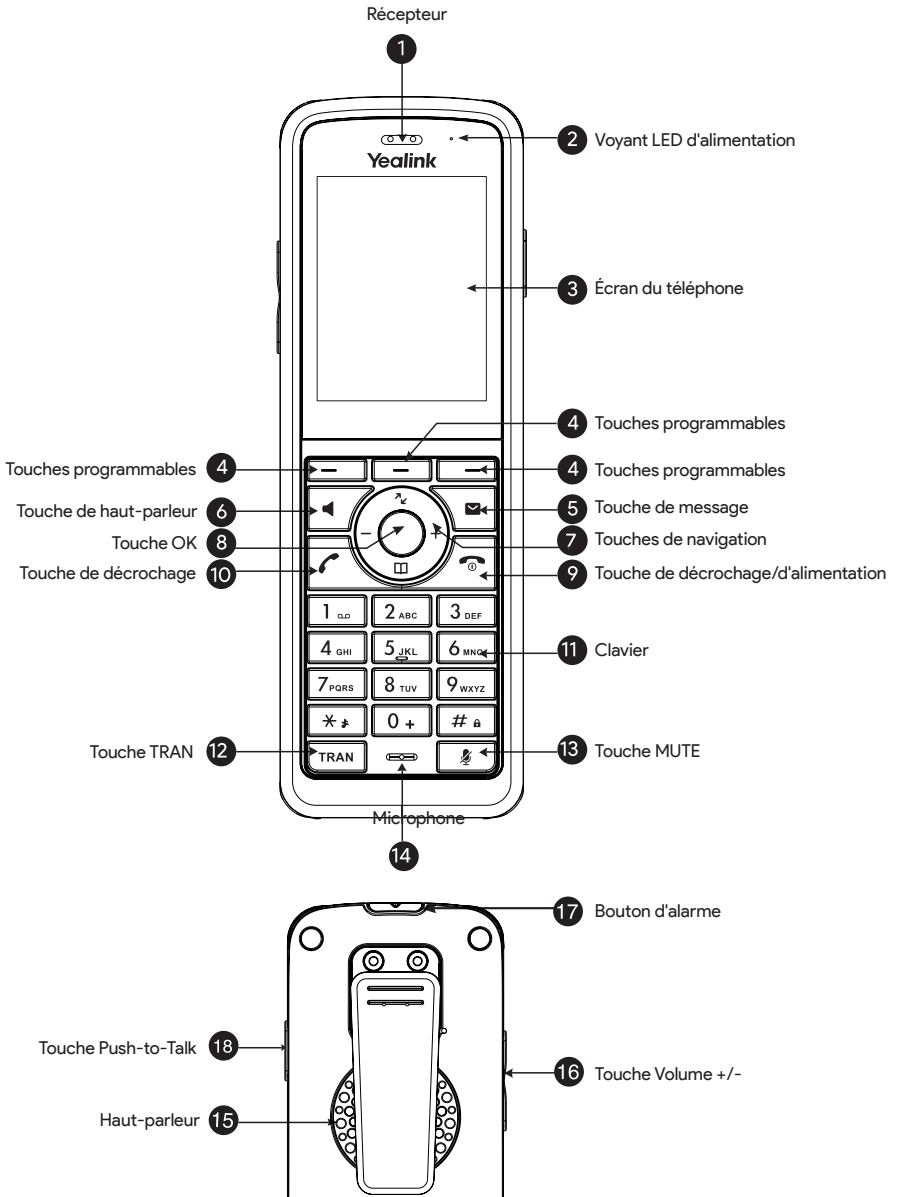
- Le combiné doit uniquement être utilisé avec l'adaptateur d'alimentation d'origine (5V/0.6A). L'utilisation d'un adaptateur tiers est susceptible d'endommager le combiné.
- Le niveau de charge du combiné est indiqué dans le coin supérieur droit de l'écran LCD.

### Caractéristiques techniques

Élément	Spécifications
Bande de fréquences :	1880-1900 MHz (Europe), 1920-1930 MHz (États-Unis), 1910-1920 MHz (Brésil)
Type de batterie	3 × 3,7V 350mAh (1,295Wh), Lithium-ion
Chargeur	Entrée 5 V CC/0,6 A
Adaptateur secteur	Entrée : 100-240 V~50/60 Hz 0,2 A Sortie : 5 V 0,6 A 3,0 W

Pour plus d'informations, consultez le guide d'utilisateur spécifique ou contactez votre administrateur système.

# Instructions du composant matériel





## Declaration of Conformity

We, YEALINK(XIAMEN) NETWORK TECHNOLOGY CO.,LTD  
Address: 309, 3rd Floor, No.16, Yun Ding North Road,  
Huli District, Xiamen City, Fujian, P.R. China  
CE DATE: 20<sup>th</sup> /June/2021  
declare that the product  
Type: DECT IP Base Station  
Model: W700  
meets the essential requirements and other relevant provisions according to the following EC Directive:  
Directive: 2014/30/EU, 2014/35/EU, RED 2014/53/EU;  
The presumption of conformity with the essential requirement is ensure according to :

Article 3.1 a (protection of the health & the safety of the user)  
Safety: EN 62368-1:2014+A11:2017  
SAR: ETSI EN 50663:2017, EN 62479:2010  
Article 3.1 b (protection requirement with respect to electromagnetic compatibility)  
EMC: EN 55032:2015 and EN 55032:2015/A11:2020, EN 55035:2017,  
EN 55035:2017/A11:2020, EN 61000-3-2:2014, EN 61000-3-2:2014,  
EN 61000-3-3:2013/A1:2019, EN 61000-3-3:2013/A1:2019  
EN 301489-6 V2.2.1, EN 301489-1 V2.2.3  
Article 3.2 (effective use of the radio spectrum)  
Radio: ETSI EN 301406 V2.2.2

Directive 2011/65/EU and (EU)2015/863 of the European Parliament and of the Council of 8 June 2011 and 4 June 2015 on the restriction of the use of certain hazardous substances in electrical and electronic equipment(RoHS 2.0)  
Directive 2012/19/EU of the European Parliament and of the Council of 4 July 2012 on Waste electrical and electronic equipment(WEEE)  
Regulation (EC) No.1907/2006 of the European Parliament and of the Council of 18 December 2006 on Registration, Evaluation, Authorization, and Restriction of Chemicals (REACH)

NAME: Huahu Wang

DATE: 20<sup>th</sup> /June/2021

TITLE: Senior Manager

*Huahu Wang*



## Declaration of Conformity

We, YEALINK(XIAMEN) NETWORK TECHNOLOGY CO.,LTD  
Address: No.666 Hulan Rd. Huli District Xiamen City, Fujian, P.R. China  
Manufacturer: YEALINK(XIAMEN) NETWORK TECHNOLOGY CO.,LTD  
Address: No.666 Hulan Rd. Huli District Xiamen City, Fujian, P.R. China  
CE DATE: 20<sup>th</sup> /April/2025  
declare that the product  
Type: DECT IP Phone  
Model: W59R Pro  
meets the essential requirements and other relevant provisions according to the following EC Directive  
Directive: 2014/30/EU, 2014/35/EU, RED 2014/53/EU;  
The presumption of conformity with the essential requirement is ensure according to :

Article 3.1 a (protection of the health & the safety of the user)  
Safety: EN IEC 62368-1:2020+A11:2020  
SAR: EN 62479:2010; EN 50663:2017  
Article 3.1 b (protection requirement with respect to electromagnetic compatibility)  
EMC: EN 55032:2015/A11:2020; EN 55035:2017/A11:2020  
EN IEC 61000-3-2:2019+A1:2021; EN 61000-3-3:2013/A2:2021  
ETSI EN 301 489-1 V2.2.3 (2019-11); ETSI EN 301 489-6 V2.2.1 (2019-04);  
ETSI EN 301 489-17 V3.2.4 (2020-09).  
Article 3.2 (effective use of the radio spectrum)  
Radio: ETSI EN 301 406-1 V2.2.2 (2016-09)  
ETSI EN 300 328 V2.2.2 (2019-07)  
Harmonized: EN 62321-1:2013

Directive 2011/65/EU and (EU)2015/863 of the European Parliament and of the Council of 8 June 2011 and 4 June 2015 on the restriction of the use of certain hazardous substances in electrical and electronic equipment(RoHS 2.0)  
Directive 2012/19/EU of the European Parliament and of the Council of 4 July 2012 on Waste electrical and electronic equipment(WEEE)  
Regulation (EC) No.1907/2006 of the European Parliament and of the Council of 18 December 2006 on Registration, Evaluation, Authorization, and Restriction of Chemicals (REACH)

The declaration of conformity is issued under the sole responsibility of the manufacturer

NAME: Huahu Wang

DATE: 20/04/2025

TITLE: Senior Manager

*Huahu Wang*  
20/04/2025

## Technical Support

Visit Yealink WIKI (<http://support.yealink.com/>) for the latest firmware, guides, FAQ, Product documents, and more. For better service, we sincerely recommend you to use Yealink Ticketing system (<https://ticket.yealink.com>) to submit all your technical issues.



430104003393



YEALINK(XIAMEN) NETWORK TECHNOLOGY CO.,LTD.  
Web: [www.yealink.com](http://www.yealink.com)  
Copyright©2025 YEALINK(XIAMEN) NETWORK  
TECHNOLOGY CO.,LTD. All rights reserved.